

# Southeast Louisiana Area Contingency Plan

## Sensitive Site Index

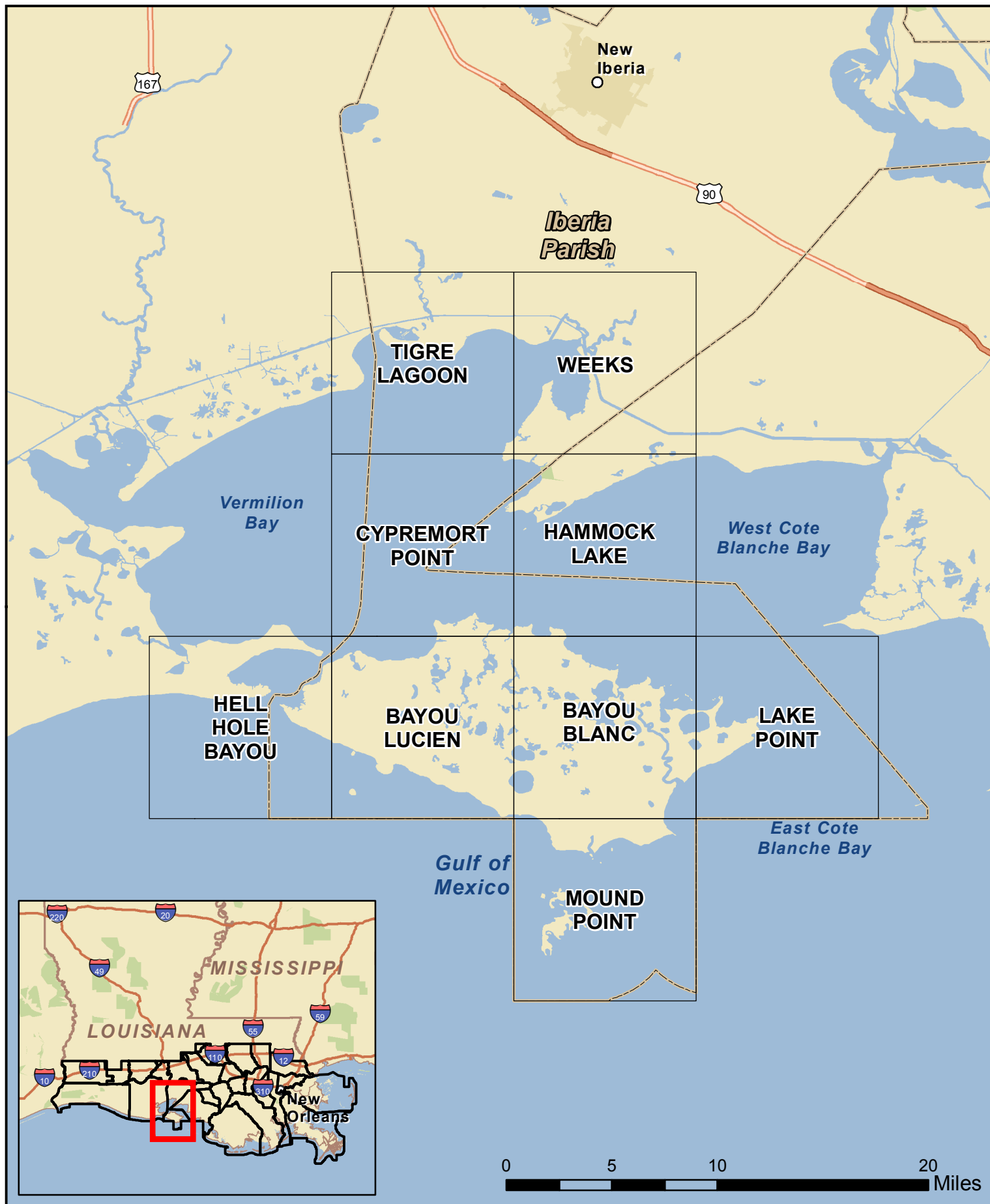
The following compilation of sensitive sites is a result of the hard work of Morgan City Area Stakeholders. The sites contained within this report will play a significant role in the development of the Geographic Response Plans, a geographic based response plan to oil and hazardous material releases.

Any modifications or additions to this set of data is welcomed and encouraged. Please contact the USCG MSU Morgan City Contingency Planning Specialist to make any submissions.

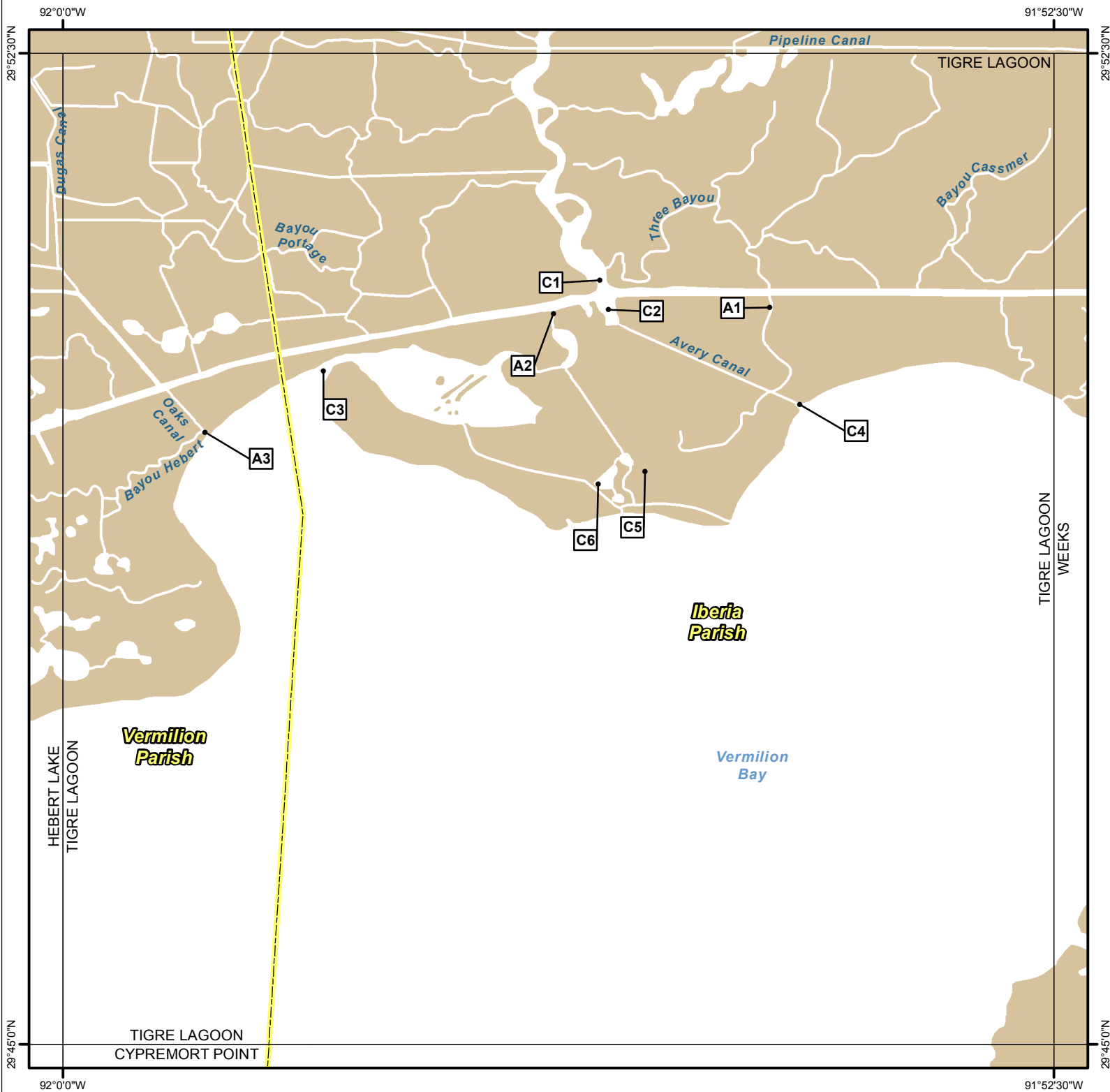


# Southeast Louisiana ACP

## Iberia Parish Index Map



# TIGRE LAGOON QUAD

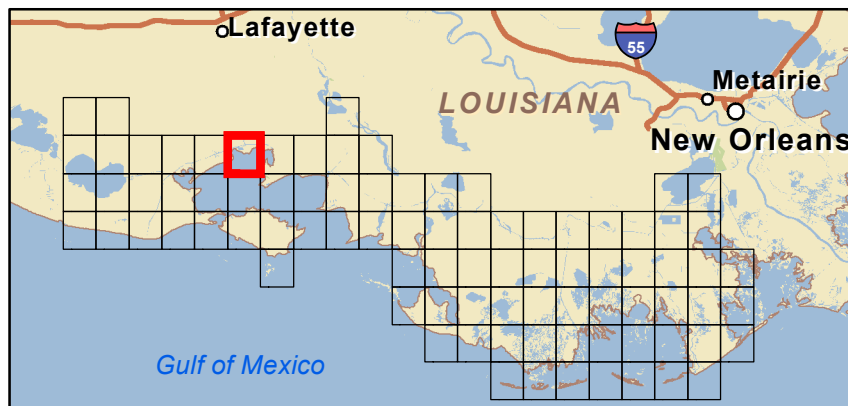


## Legend

- GRP Sites
- Quad Boundaries
- Parish Boundaries

0 0.5 1 2 3 Kilometers

0 0.5 1 2 3 Miles



Site Information: A1		Location Information	
Name: Bayou at Intracoastal Waterway		Parish:	Iberia
		Quad Name:	Tigre Lagoon
Priority: A		Quad Number:	2909109
Site Alias: N/A		Mile Marker:	144.5
		Managed (Y/N)?:	N
Site Description: Sensitive Habitat		Latitude:	29° 50' 34.513" N
		Longitude:	91° 54' 38.915" W
Response Considerations			
Site Strategy: Deflection Booming		Site Strategy Comments:	
Site Waterbody Type: Narrow Tidal Channel			
Current Wave Action: Current >1 kt			
Waterbody Opening: < 500 ft			
Resources At Risk			
ESI Code: 10A		Resources At Risk Comments: Sensitive Habitat	
ESI Description 10A: Salt- and brackish-water marshes			
Contact Information			
Contact: N/A		Special Contact:	
Site Statistics			
Submitted By DEQ-Shane Miller and Steve Lorio		State Submitter: DEQ-Shane Miller and Steve Lorio	
Submit Date: 2013.04.16		State Comments: Sensitive Habitat	

Site Information: A2		Location Information	
<b>Name:</b> Mouth of Tigre Lagoon at Intracoastal Waterway	<b>Parish:</b>	Iberia	
	<b>Quad Name:</b>	Tigre Lagoon	
<b>Priority:</b> A	<b>Quad Number:</b>	2909109	
<b>Site Alias:</b> N/A	<b>Mile Marker:</b>	146.1	
	<b>Managed (Y/N)?:</b>	N	
<b>Site Description:</b> Sensitive Habitat	<b>Latitude:</b>	29° 50' 31.849" N	
	<b>Longitude:</b>	91° 56' 17.218" W	
Response Considerations			
<b>Site Strategy:</b> Deflection Booming		<b>Site Strategy Comments:</b>	
<b>Site Waterbody Type:</b> Narrow Tidal Channel			
<b>Current Wave Action:</b> Current >1 kt			
<b>Waterbody Opening:</b> < 500 ft			
Resources At Risk			
<b>ESI Code:</b> 10D		<b>Resources At Risk Comments:</b> Sensitive Habitat	
<b>ESI Description</b> 10D: Scrub-shrub wetlands			
Contact Information			
<b>Contact:</b> N/A		<b>Special Contact:</b>	
Site Statistics			
<b>Submitted By</b> DEQ-Shane Miller and Steve Lorio		<b>State Submitter:</b> DEQ-Shane Miller and Steve Lorio	
<b>Submit Date:</b> 2013.04.16		<b>State Comments:</b> Sensitive Habitat	

Site Information: A3		Location Information	
Name: Oaks Canal / Herbert Bayou		Parish:	Vermilion
		Quad Name:	Tigre Lagoon
Priority:	A	Quad Number:	2909109
Site Alias: N/A		Mile Marker:	
		Managed (Y/N)?:	N
Site Description: Sensitive Habitat		Latitude:	29° 49' 37.968" N
		Longitude:	91° 58' 55.616" W
Response Considerations			
Site Strategy: Deflection Booming		Site Strategy Comments:	
Site Waterbody Type: Narrow Tidal Channel			
Current Wave Action: Current >1 kt			
Waterbody Opening: < 500 ft			
Resources At Risk			
ESI Code: 10A		Resources At Risk Comments: Inlet To Marsh From Bay	
ESI Description 10A: Salt- and brackish-water marshes			
Contact Information			
Contact: N/A		Special Contact:	
Site Statistics			
Submitted By LDWF-DJ Garland and Cassidy Lejeune		State Submitter: LDWF/Lafourche Parish/LDEQ	
Submit Date: 2013.04.16		State Comments:	

Site Information: C1		Location Information	
<b>Name:</b> Entrance to Bayou Petite Anse		<b>Parish:</b>	Iberia
		<b>Quad Name:</b>	Tigre Lagoon
<b>Priority:</b> C		<b>Quad Number:</b>	2909109
<b>Site Alias:</b> State Recreation Area (Submitted by State)		<b>Mile Marker:</b>	
		<b>Managed (Y/N)?:</b> N	
<b>Site Description:</b> Marshland and fisheries		<b>Latitude:</b>	29° 50' 46.937" N
		<b>Longitude:</b>	91° 55' 56.180" W
Response Considerations			
<b>Site Strategy:</b> Deflection Booming		<b>Site Strategy Comments:</b>	
<b>Site Waterbody Type:</b> Narrow Tidal Channel			
<b>Current Wave Action:</b> Current >1 kt			
<b>Waterbody Opening:</b> 500-1000 ft			
Resources At Risk			
<b>ESI Code:</b> 10A		<b>Resources At Risk Comments:</b>	
<b>ESI Description</b> 10A: Salt- and brackish-water marshes			
		Marshland and fisheries	
Contact Information			
<b>Contact:</b> N/A		<b>Special Contact:</b>	
Site Statistics			
<b>Submitted By</b> Prescott Marshall		<b>State Submitter:</b> DEQ/St. Mary Parish/DNR/CPRA	
<b>Submit Date:</b> 2012.09.12		<b>State Comments:</b> Point is in question by State	

Site Information: C2		Location Information	
<b>Name:</b> Intersection of Avery Canal and Intracoastal Waterway	<b>Parish:</b>	Iberia	
	<b>Quad Name:</b>	Tigre Lagoon	
<b>Priority:</b> C	<b>Quad Number:</b>	2909109	
<b>Site Alias:</b> None	<b>Mile Marker:</b>		
	<b>Managed (Y/N)?:</b>	N	
	<b>Site Description:</b> Marshland and fisheries	<b>Latitude:</b>	29° 50' 33.490" N
	<b>Longitude:</b>	91° 55' 52.217" W	
Response Considerations			
<b>Site Strategy:</b> Deflection Booming		<b>Site Strategy Comments:</b>	
<b>Site Waterbody Type:</b> Narrow Tidal Channel			
<b>Current Wave Action:</b> Current >1 kt			
<b>Waterbody Opening:</b> < 500 ft			
Resources At Risk			
<b>ESI Code:</b> 10A		<b>Resources At Risk Comments:</b>	
<b>ESI Description</b> 10A: Salt- and brackish-water marshes			
		Marshland and fisheries	
Contact Information			
<b>Contact:</b> N/A		<b>Special Contact:</b>	
Site Statistics			
<b>Submitted By</b> Prescott Marshall		<b>State Submitter:</b> DEQ/Iberia Parish/LDWF/DNR/CPRA	
<b>Submit Date:</b> 2012.09.12		<b>State Comments:</b> Agencies concur with point	



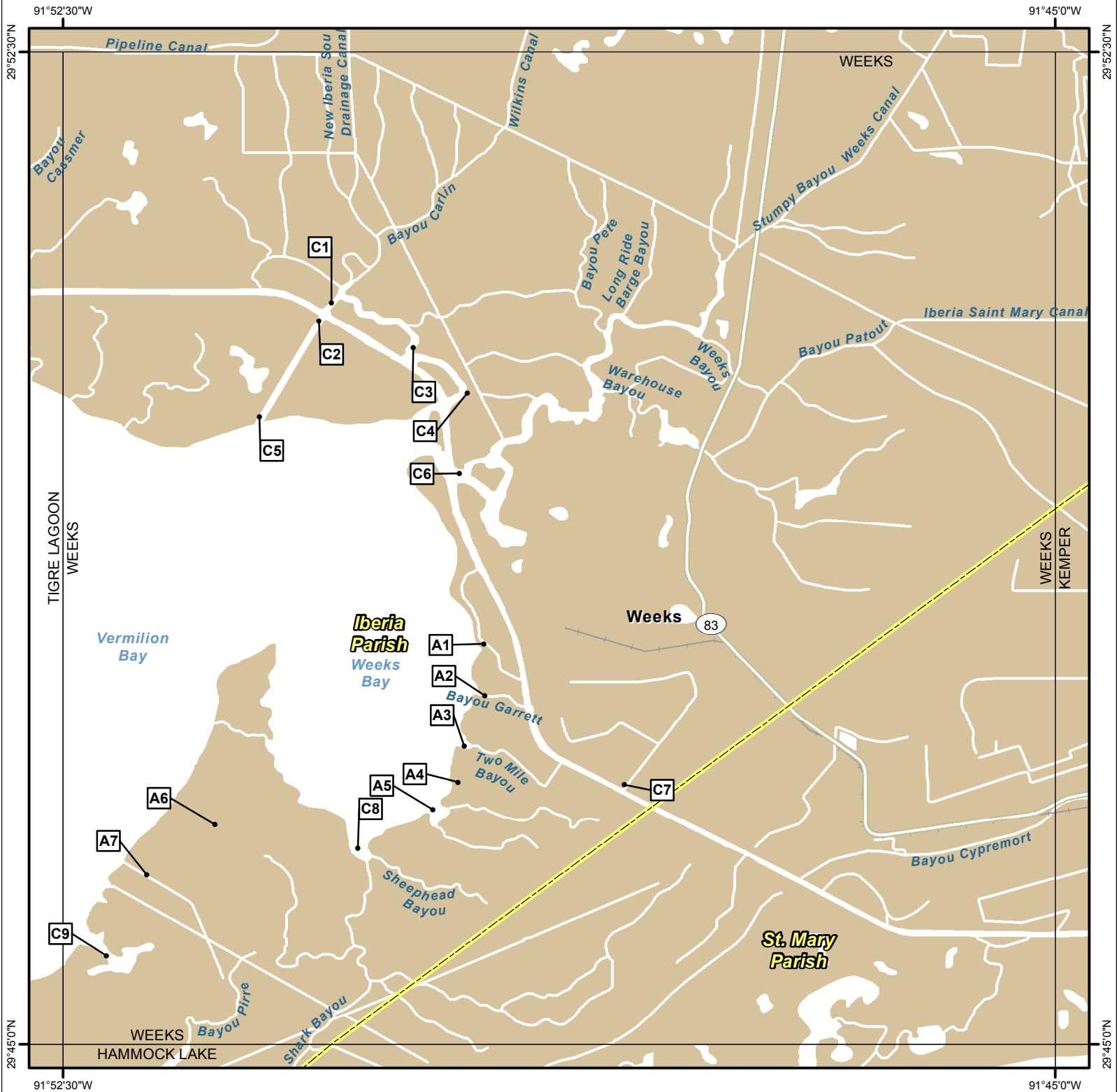
Site Information: C3		Location Information	
<b>Name:</b> Eastern Entrance/ Tigre Lagoon	<b>Parish:</b> Iberia	<b>Quad Name:</b> Tigre Lagoon	
<b>Priority:</b> C	<b>Quad Number:</b> 2909109		
<b>Site Alias:</b> None	<b>Mile Marker:</b>		
	<b>Managed (Y/N)?:</b> N		
	<b>Latitude:</b> 29° 50' 06.045" N		
<b>Site Description:</b> Entrance from Vermillion bay	<b>Longitude:</b> 91° 58' 01.697" W		
Response Considerations			
<b>Site Strategy:</b> Deflection Booming		<b>Site Strategy Comments:</b>	
<b>Site Waterbody Type:</b> Narrow Tidal Channel			
<b>Current Wave Action:</b> Current >1 kt			
<b>Waterbody Opening:</b> < 500 ft			
Resources At Risk			
<b>ESI Code:</b> 10A		<b>Resources At Risk Comments:</b>	
<b>ESI Description</b> 10A: Salt- and brackish-water marshes			
		Marshland and fisheries	
Contact Information			
<b>Contact:</b> N/A		<b>Special Contact:</b>	
Site Statistics			
<b>Submitted By</b> Prescott Marshall		<b>State Submitter:</b> DEQ/Iberia Parish/LDWF/DNR/CPRA	
<b>Submit Date:</b> 2012.09.12		<b>State Comments:</b> Agencies concur with point	

Site Information: C4		Location Information	
<b>Name:</b> Western Entrance/Tigre Lagoon	<b>Parish:</b>	Iberia	
	<b>Quad Name:</b>	Tigre Lagoon	
<b>Priority:</b> C	<b>Quad Number:</b>	2909109	
<b>Site Alias:</b> None	<b>Mile Marker:</b>		
	<b>Managed (Y/N)?:</b>	N	
	<b>Latitude:</b>	29° 49' 50.619" N	
<b>Site Description:</b> Entrance from Vermillion bay	<b>Longitude:</b>	91° 54' 25.385" W	
Response Considerations			
<b>Site Strategy:</b> Diversion Booming to Collection Point		<b>Site Strategy Comments:</b>	
<b>Site Waterbody Type:</b> Narrow Tidal Channel			
<b>Current Wave Action:</b> Current >1 kt			
<b>Waterbody Opening:</b> < 500 ft			
Resources At Risk			
<b>ESI Code:</b> 10A		<b>Resources At Risk Comments:</b>	
<b>ESI Description</b> 10A: Salt- and brackish-water marshes			
		Marshland and fisheries	
Contact Information			
<b>Contact:</b> N/A		<b>Special Contact:</b>	
Site Statistics			
<b>Submitted By</b> Prescott Marshall		<b>State Submitter:</b> DEQ/Iberia Parish/LDWF/DNR/CPRA	
<b>Submit Date:</b> 2012.09.12		<b>State Comments:</b> Agencies concur with point	

Site Information: C5		Location Information	
Name: Southwestern Entrance/Tigre Lagoon		Parish:	Iberia
		Quad Name:	Tigre Lagoon
Priority: C		Quad Number:	2909109
Site Alias: None		Mile Marker:	
		Managed (Y/N)?: N	
Site Description: Entrance from Vermillion bay		Latitude:	29° 49' 20.133" N
		Longitude:	91° 55' 35.672" W
Response Considerations			
Site Strategy: Exclusion Booming		Site Strategy Comments:	
Site Waterbody Type: Narrow Tidal Channel			
Current Wave Action: Currents <1 kt			
Waterbody Opening: < 500 ft			
Resources At Risk			
ESI Code: 10A		Resources At Risk Comments:	
ESI Description 10A: Salt- and brackish-water marshes			
		Marshland and fisheries	
Contact Information			
Contact: N/A		Special Contact:	
Site Statistics			
Submitted By Prescott Marshall		State Submitter: DEQ/Iberia Parish/LDWF/DNR/CPRA	
Submit Date: 2012.09.12		State Comments: Agencies concur with point	

Site Information: C6		Location Information	
<b>Name:</b> Southeastern Entrance/Tigre Lagoon	<b>Parish:</b> Iberia	<b>Quad Name:</b> Tigre Lagoon	
	<b>Quad Number:</b> 2909109		
<b>Priority:</b> C	<b>Mile Marker:</b>		
<b>Site Alias:</b> None	<b>Managed (Y/N)?:</b> N		
<b>Site Description:</b> Entrance from Vermillion bay	<b>Latitude:</b> 29° 49' 14.331" N		
	<b>Longitude:</b> 91° 55' 56.997" W		
Response Considerations			
<b>Site Strategy:</b> Deflection Booming		<b>Site Strategy Comments:</b>	
<b>Site Waterbody Type:</b> Narrow Tidal Channel			
<b>Current Wave Action:</b> Current >1 kt			
<b>Waterbody Opening:</b> < 500 ft			
Resources At Risk			
<b>ESI Code:</b> 10A		<b>Resources At Risk Comments:</b> Marshland and fisheries	
<b>ESI Description</b> 10A: Salt- and brackish-water marshes			
Contact Information			
<b>Contact:</b> N/A		<b>Special Contact:</b>	
Site Statistics			
<b>Submitted By</b> Prescott Marshall		<b>State Submitter:</b> DEQ/Iberia Parish/LDWF/DNR/CPRA	
<b>Submit Date:</b> 2012.09.12		<b>State Comments:</b> Agencies concur with point	

# WEEKS QUAD

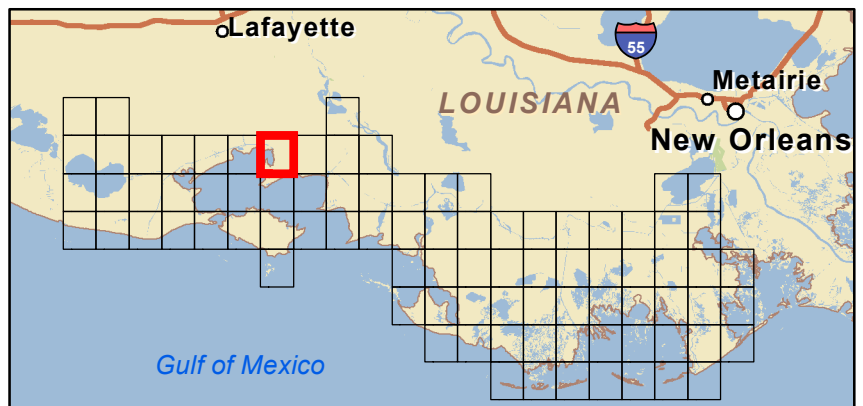


## Legend

- GRP Sites
- Quad Boundaries
- ▭ Parish Boundaries

0 0.5 1 2 3 Kilometers

0 0.5 1 2 3 Miles



Site Information: A1		Location Information	
<b>Name:</b> Canal at Weeks Bay		<b>Parish:</b>	Iberia
		<b>Quad Name:</b>	Weeks
<b>Priority:</b> A		<b>Quad Number:</b> 2909110	
<b>Site Alias:</b> N/A		<b>Mile Marker:</b>	
		<b>Managed (Y/N)?:</b> N	
<b>Site Description:</b> Sensitive Habitat		<b>Latitude:</b>	29° 48' 01.622" N
		<b>Longitude:</b>	91° 49' 19.018" W
Response Considerations			
<b>Site Strategy:</b> Deflection Booming		<b>Site Strategy Comments:</b>	
<b>Site Waterbody Type:</b> Narrow Tidal Channel			
<b>Current Wave Action:</b> Current >1 kt			
<b>Waterbody Opening:</b> < 500 ft			
Resources At Risk			
<b>ESI Code:</b> 10D		<b>Resources At Risk Comments:</b> Sensitive Habitat	
<b>ESI Description</b> 10D: Scrub-shrub wetlands			
Contact Information			
<b>Contact:</b> N/A		<b>Special Contact:</b>	
Site Statistics			
<b>Submitted By</b> DEQ-Shane Miller and Steve Lorio		<b>State Submitter:</b> DEQ-Shane Miller and Steve Lorio	
<b>Submit Date:</b> 2013.04.16		<b>State Comments:</b> Sensitive Habitat	

Site Information: A2		Location Information	
<b>Name:</b> Bayou Garrett at Weeks Bay	<b>Parish:</b> Iberia	<b>Quad Name:</b> Weeks	
	<b>Quad Number:</b> 2909110		
<b>Priority:</b> A	<b>Mile Marker:</b>		
<b>Site Alias:</b> N/A	<b>Managed (Y/N)?:</b> N		
	<b>Latitude:</b> 29° 47' 37.960" N		
	<b>Longitude:</b> 91° 49' 18.767" W		
<b>Site Description:</b> Sensitive Habitat			
Response Considerations			
<b>Site Strategy:</b> Deflection Booming		<b>Site Strategy Comments:</b>	
<b>Site Waterbody Type:</b> Narrow Tidal Channel			
<b>Current Wave Action:</b> Current >1 kt			
<b>Waterbody Opening:</b> < 500 ft			
Resources At Risk			
<b>ESI Code:</b> 10A		<b>Resources At Risk Comments:</b> Sensitive Habitat	
<b>ESI Description</b> 10A: Salt- and brackish-water marshes			
Contact Information			
<b>Contact:</b> N/A		<b>Special Contact:</b>	
Site Statistics			
<b>Submitted By</b> DEQ-Shane Miller and Steve Lorio		<b>State Submitter:</b> DEQ-Shane Miller and Steve Lorio	
<b>Submit Date:</b> 2013.04.16		<b>State Comments:</b> Sensitive Habitat	

Site Information: A3		Location Information	
<b>Name:</b> Two Mouth Bayou at Weeks Bay	<b>Parish:</b>	Iberia	
	<b>Quad Name:</b>	Weeks	
<b>Priority:</b> A	<b>Quad Number:</b>	2909110	
<b>Site Alias:</b> N/A	<b>Mile Marker:</b>		
	<b>Managed (Y/N)?:</b>	N	
	<b>Latitude:</b>	29° 47' 15.026" N	
<b>Site Description:</b> Sensitive Habitat	<b>Longitude:</b>	91° 49' 28.062" W	
Response Considerations			
<b>Site Strategy:</b> Exclusion Booming		<b>Site Strategy Comments:</b>	
<b>Site Waterbody Type:</b> Narrow Tidal Channel			
<b>Current Wave Action:</b> Currents <1 kt			
<b>Waterbody Opening:</b> < 500 ft			
Resources At Risk			
<b>ESI Code:</b> 10A		<b>Resources At Risk Comments:</b>	
<b>ESI Description</b> 10A: Salt- and brackish-water marshes			
		Sensitive Habitat	
Contact Information			
<b>Contact:</b> N/A		<b>Special Contact:</b>	
Site Statistics			
<b>Submitted By</b> DEQ-Shane Miller and Steve Lorio		<b>State Submitter:</b> DEQ-Shane Miller and Steve Lorio	
<b>Submit Date:</b> 2013.04.16		<b>State Comments:</b> Sensitive Habitat	



Site Information: A4		Location Information	
<b>Name:</b> Multiple Bayous (north) at Weeks Bay	<b>Parish:</b>	Iberia	
	<b>Quad Name:</b>	Weeks	
<b>Priority:</b> A	<b>Quad Number:</b>	2909110	
<b>Site Alias:</b> N/A	<b>Mile Marker:</b>		
	<b>Managed (Y/N)?:</b>	N	
	<b>Latitude:</b>	29° 46' 58.806" N	
<b>Site Description:</b> Sensitive Habitat	<b>Longitude:</b>	91° 49' 30.926" W	
Response Considerations			
<b>Site Strategy:</b> Exclusion Booming		<b>Site Strategy Comments:</b>	
<b>Site Waterbody Type:</b> Narrow Tidal Channel			
<b>Current Wave Action:</b> Currents <1 kt			
<b>Waterbody Opening:</b> < 500 ft			
Resources At Risk			
<b>ESI Code:</b> 10A		<b>Resources At Risk Comments:</b>	
<b>ESI Description</b> 10A: Salt- and brackish-water marshes			
		Sensitive Habitat	
Contact Information			
<b>Contact:</b> N/A		<b>Special Contact:</b>	
Site Statistics			
<b>Submitted By</b> DEQ-Shane Miller and Steve Lorio		<b>State Submitter:</b> DEQ-Shane Miller and Steve Lorio	
<b>Submit Date:</b> 2013.04.16		<b>State Comments:</b> Sensitive Habitat	

Site Information: A5		Location Information	
Name: Multiple Bayous (south) at Weeks Bay		Parish:	Iberia
		Quad Name:	Weeks
Priority:	A	Quad Number:	2909110
Site Alias: N/A		Mile Marker:	
		Managed (Y/N)?: N	
Site Description: Sensitive Habitat		Latitude:	29° 46' 46.313" N
		Longitude:	91° 49' 42.230" W
Response Considerations			
Site Strategy: Exclusion Booming		Site Strategy Comments:	
Site Waterbody Type: Narrow Tidal Channel			
Current Wave Action: Currents <1 kt			
Waterbody Opening: 500-1000 ft			
Resources At Risk			
ESI Code: 10A		Resources At Risk Comments:	
ESI Description 10A: Salt- and brackish-water marshes			
		Sensitive Habitat	
Contact Information			
Contact: N/A		Special Contact:	
Site Statistics			
Submitted By DEQ-Shane Miller and Steve Lorio		State Submitter: DEQ-Shane Miller and Steve Lorio	
Submit Date: 2013.04.16		State Comments: Sensitive Habitat	

Site Information: A6		Location Information	
Name: Canal (north)	Parish: Iberia	Quad Name: Weeks	
	Priority: A	Quad Number: 2909110	
Site Alias: N/A	Mile Marker:	Managed (Y/N)?: N	
Site Description: Sensitive Habitat	Latitude: 29° 46' 39.606" N	Longitude: 91° 51' 21.062" W	
Response Considerations			
Site Strategy: Exclusion Booming		Site Strategy Comments:	
Site Waterbody Type: Narrow Tidal Channel			
Current Wave Action: Currents <1 kt			
Waterbody Opening: < 500 ft			
Resources At Risk			
ESI Code: 10A		Resources At Risk Comments:	
ESI Description 10A: Salt- and brackish-water marshes		Sensitive Habitat	
Contact Information			
Contact: N/A		Special Contact:	
Site Statistics			
Submitted By DEQ-Shane Miller and Steve Lorio		State Submitter: DEQ-Shane Miller and Steve Lorio	
Submit Date: 2013.04.16		State Comments: Sensitive Habitat	

Site Information: A7		Location Information	
Name: Canal (south)	Parish: Iberia	Quad Name: Weeks	
	Priority: A	Quad Number: 2909110	
Site Alias: N/A	Mile Marker:	Managed (Y/N)?: N	
Site Description: Sensitive Habitat	Latitude: 29° 46' 16.820" N	Longitude: 91° 51' 52.072" W	
Response Considerations			
Site Strategy: Exclusion Booming		Site Strategy Comments:	
Site Waterbody Type: Narrow Tidal Channel			
Current Wave Action: Currents <1 kt			
Waterbody Opening: < 500 ft			
Resources At Risk			
ESI Code: 10A		Resources At Risk Comments:	
ESI Description 10A: Salt- and brackish-water marshes		Sensitive Habitat	
Contact Information			
Contact: N/A		Special Contact:	
Site Statistics			
Submitted By DEQ-Shane Miller and Steve Lorio		State Submitter: DEQ-Shane Miller and Steve Lorio	
Submit Date: 2013.04.16		State Comments: Sensitive Habitat	

Site Information: C1		Location Information	
<b>Name:</b> Bayou Carlin at Intracoastal Waterway	<b>Parish:</b>	Iberia	
	<b>Quad Name:</b>	Weeks	
<b>Priority:</b> C	<b>Quad Number:</b>	2909110	
<b>Site Alias:</b> None	<b>Mile Marker:</b>		
	<b>Managed (Y/N)?:</b>	N	
	<b>Latitude:</b>	29° 50' 36.294" N	
<b>Site Description:</b> North side of ICW	<b>Longitude:</b>	91° 50' 28.215" W	
Response Considerations			
<b>Site Strategy:</b> Deflection Booming	<b>Site Strategy Comments:</b>		
<b>Site Waterbody Type:</b> Narrow Tidal Channel			
<b>Current Wave Action:</b> Current >1 kt			
<b>Waterbody Opening:</b> 500-1000 ft			
Resources At Risk			
<b>ESI Code:</b> 10A	<b>Resources At Risk Comments:</b>		
<b>ESI Description</b> 10A: Salt- and brackish-water marshes			
<b>Marshland and fisheries</b>			
Contact Information			
<b>Contact:</b> N/A	<b>Special Contact:</b>		
Site Statistics			
<b>Submitted By</b> Prescott Marshall	<b>State Submitter:</b> DEQ/Iberia Parish/LDWF/DNR/CPRA		
<b>Submit Date:</b> 2012.09.12	<b>State Comments:</b> Agencies concur with point		

Site Information: C2		Location Information	
<b>Name:</b> Weeks Island Channel at Intracoastal Waterway		<b>Parish:</b>	Iberia
		<b>Quad Name:</b>	Weeks
<b>Priority:</b> C		<b>Quad Number:</b>	2909110
<b>Site Alias:</b> None		<b>Mile Marker:</b>	
		<b>Managed (Y/N)?:</b> N	
<b>Site Description:</b> Marshland and fisheries		<b>Latitude:</b>	29° 50' 28.123" N
		<b>Longitude:</b>	91° 50' 33.906" W
Response Considerations			
<b>Site Strategy:</b> Deflection Booming		<b>Site Strategy Comments:</b>	
<b>Site Waterbody Type:</b> Narrow Tidal Channel			
<b>Current Wave Action:</b> Current >1 kt			
<b>Waterbody Opening:</b> < 500 ft			
Resources At Risk			
<b>ESI Code:</b> 10A		<b>Resources At Risk Comments:</b>	
<b>ESI Description</b> 10A: Salt- and brackish-water marshes			
Contact Information			
<b>Contact:</b> N/A		<b>Special Contact:</b>	
Site Statistics			
<b>Submitted By</b> Prescott Marshall		<b>State Submitter:</b> DEQ/Iberia Parish/LDWF/DNR/CPRA	
<b>Submit Date:</b> 2012.09.12		<b>State Comments:</b> Agencies concur with point	

Site Information: C3		Location Information	
<b>Name:</b> Bayou at Intracoastal Waterway (north)	<b>Parish:</b>	Iberia	
	<b>Quad Name:</b>	Weeks	
<b>Priority:</b> C	<b>Quad Number:</b>	2909110	
<b>Site Alias:</b> None	<b>Mile Marker:</b>		
	<b>Managed (Y/N)?:</b>	N	
	<b>Latitude:</b>	29° 50' 16.121" N	
<b>Site Description:</b> Within the vicinity of Weeks Island	<b>Longitude:</b>	91° 49' 51.200" W	
Response Considerations			
<b>Site Strategy:</b> Deflection Booming	<b>Site Strategy Comments:</b>		
<b>Site Waterbody Type:</b> Narrow Tidal Channel			
<b>Current Wave Action:</b> Current >1 kt			
<b>Waterbody Opening:</b> < 500 ft			
Resources At Risk			
<b>ESI Code:</b> 10A	<b>Resources At Risk Comments:</b> Marshland and fisheries		
<b>ESI Description</b> 10A: Salt- and brackish-water marshes			
Contact Information			
<b>Contact:</b> N/A	<b>Special Contact:</b>		
Site Statistics			
<b>Submitted By</b> Prescott Marshall	<b>State Submitter:</b> DEQ/Iberia Parish/LDWF/DNR/CPRA		
<b>Submit Date:</b> 2012.09.12	<b>State Comments:</b> Agencies concur with point		

Site Information: C4		Location Information	
<b>Name:</b> Bayou at Intracoastal Waterway (central)	<b>Parish:</b>	Iberia	
	<b>Quad Name:</b>	Weeks	
<b>Priority:</b> C	<b>Quad Number:</b>	2909110	
<b>Site Alias:</b> None	<b>Mile Marker:</b>		
	<b>Managed (Y/N)?:</b>	N	
	<b>Latitude:</b>	29° 49' 55.370" N	
<b>Site Description:</b> Within the vicinity of Weeks Island	<b>Longitude:</b>	91° 49' 26.618" W	
Response Considerations			
<b>Site Strategy:</b> Deflection Booming	<b>Site Strategy Comments:</b>		
<b>Site Waterbody Type:</b> Narrow Tidal Channel			
<b>Current Wave Action:</b> Current >1 kt			
<b>Waterbody Opening:</b> < 500 ft			
Resources At Risk			
<b>ESI Code:</b> 10A	<b>Resources At Risk Comments:</b> Marshland and fisheries		
<b>ESI Description</b> 10A: Salt- and brackish-water marshes			
Contact Information			
<b>Contact:</b> N/A	<b>Special Contact:</b>		
Site Statistics			
<b>Submitted By</b> Prescott Marshall	<b>State Submitter:</b> DEQ/Iberia Parish/LDWF/DNR/CPRA		
<b>Submit Date:</b> 2012.09.12	<b>State Comments:</b> Agencies concur with point		



Site Information: C5		Location Information	
<b>Name:</b> Weeks Bay Channel	<b>Parish:</b> Iberia	<b>Quad Name:</b> Weeks	
	<b>Quad Number:</b> 2909110		
<b>Priority:</b> C	<b>Mile Marker:</b>		
<b>Site Alias:</b> None	<b>Managed (Y/N)?:</b> N		
	<b>Latitude:</b> 29° 49' 44.438" N		
	<b>Longitude:</b> 91° 51' 01.003" W		
<b>Response Considerations</b>			
<b>Site Strategy:</b> Deflection Booming		<b>Site Strategy Comments:</b>	
<b>Site Waterbody Type:</b> Narrow Tidal Channel			
<b>Current Wave Action:</b> Current >1 kt			
<b>Waterbody Opening:</b> < 500 ft			
<b>Resources At Risk</b>			
<b>ESI Code:</b> 10A		<b>Resources At Risk Comments:</b> Marshland and fisheries	
<b>ESI Description</b> 10A: Salt- and brackish-water marshes			
<b>Contact Information</b>			
<b>Contact:</b> N/A		<b>Special Contact:</b>	
<b>Site Statistics</b>			
<b>Submitted By</b> Prescott Marshall		<b>State Submitter:</b> DEQ/Iberia Parish/LDWF/DNR/CPRA	
<b>Submit Date:</b> 2012.09.12		<b>State Comments:</b> Agencies concur with point	

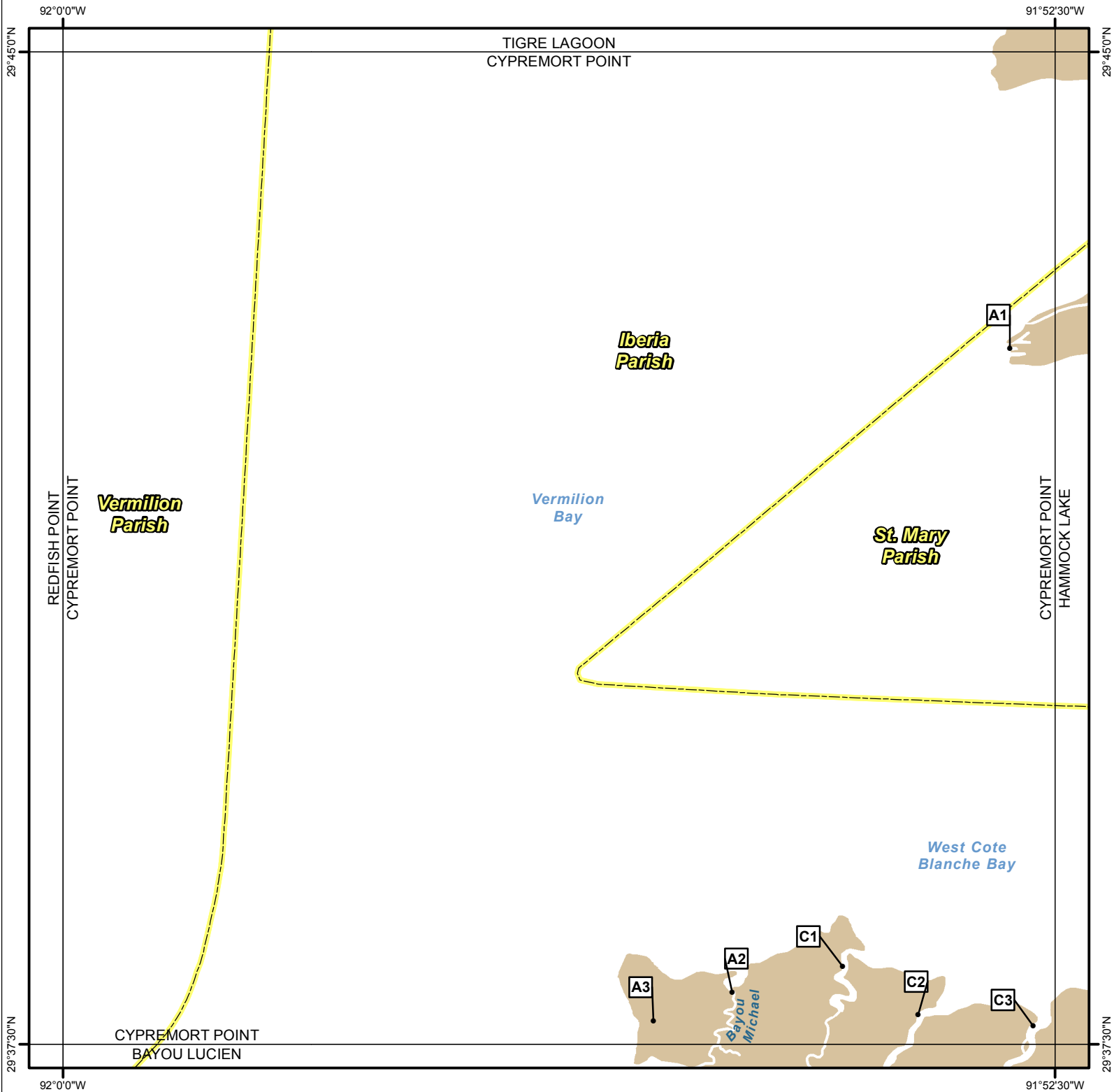
Site Information: C6		Location Information	
<b>Name:</b> Bayou at Intracoastal Waterway (south)	<b>Parish:</b>	Iberia	
	<b>Quad Name:</b>	Weeks	
<b>Priority:</b> C	<b>Quad Number:</b>	2909110	
<b>Site Alias:</b> None	<b>Mile Marker:</b>		
	<b>Managed (Y/N)?:</b>	N	
	<b>Latitude:</b>	29° 49' 18.806" N	
<b>Site Description:</b> Southeast of Weeks Island	<b>Longitude:</b>	91° 49' 30.210" W	
Response Considerations			
<b>Site Strategy:</b> Deflection Booming		<b>Site Strategy Comments:</b>	
<b>Site Waterbody Type:</b> Narrow Tidal Channel			
<b>Current Wave Action:</b> Current >1 kt			
<b>Waterbody Opening:</b> 500-1000 ft			
Resources At Risk			
<b>ESI Code:</b> 10A		<b>Resources At Risk Comments:</b>	
<b>ESI Description</b> 10A: Salt- and brackish-water marshes			
		Marshland and fisheries	
Contact Information			
<b>Contact:</b> N/A		<b>Special Contact:</b>	
Site Statistics			
<b>Submitted By</b> Prescott Marshall		<b>State Submitter:</b> DEQ/Iberia Parish/LDWF/DNR/CPRA	
<b>Submit Date:</b> 2012.09.12		<b>State Comments:</b> Agencies concur with point	

Site Information: C7		Location Information	
<b>Name:</b> Entrance to old oil drilling channel from Intracoastal Waterway	<b>Parish:</b>	Iberia	
	<b>Quad Name:</b>	Weeks	
<b>Priority:</b> C	<b>Quad Number:</b>	2909110	
<b>Site Alias:</b> None	<b>Mile Marker:</b>		
	<b>Managed (Y/N)?:</b>	N	
	<b>Latitude:</b>	29° 46' 57.669" N	
<b>Site Description:</b> Marshland and fisheries	<b>Longitude:</b>	91° 48' 15.344" W	
Response Considerations			
<b>Site Strategy:</b> Deflection Booming	<b>Site Strategy Comments:</b>		
<b>Site Waterbody Type:</b> Narrow Tidal Channel			
<b>Current Wave Action:</b> Current >1 kt			
<b>Waterbody Opening:</b> < 500 ft			
Resources At Risk			
<b>ESI Code:</b> 10A	<b>Resources At Risk Comments:</b> Marshland and fisheries		
<b>ESI Description</b> 10A: Salt- and brackish-water marshes			
Contact Information			
<b>Contact:</b> N/A	<b>Special Contact:</b>		
Site Statistics			
<b>Submitted By</b> Prescott Marshall	<b>State Submitter:</b> DEQ/Iberia Parish/LDWF/DNR/CPRA		
<b>Submit Date:</b> 2012.09.12	<b>State Comments:</b> Agencies concur with point		

Site Information: C8		Location Information	
<b>Name:</b> Northern Entrance of Shark Bayou	<b>Parish:</b> Iberia	<b>Quad Name:</b> Weeks	
	<b>Quad Number:</b> 2909110		
<b>Priority:</b> C	<b>Mile Marker:</b>		
<b>Site Alias:</b> None	<b>Managed (Y/N)?:</b> N		
<b>Site Description:</b> From Weeks Bay	<b>Latitude:</b> 29° 46' 29.108" N		
	<b>Longitude:</b> 91° 50' 16.253" W		
Response Considerations			
<b>Site Strategy:</b> Deflection Booming		<b>Site Strategy Comments:</b>	
<b>Site Waterbody Type:</b> Narrow Tidal Channel			
<b>Current Wave Action:</b> Current >1 kt			
<b>Waterbody Opening:</b> 500-1000 ft			
Resources At Risk			
<b>ESI Code:</b> 10A		<b>Resources At Risk Comments:</b> Marshland and fisheries	
<b>ESI Description</b> 10A: Salt- and brackish-water marshes			
Contact Information			
<b>Contact:</b> N/A		<b>Special Contact:</b>	
Site Statistics			
<b>Submitted By</b> Prescott Marshall		<b>State Submitter:</b> DEQ/Iberia Parish/LDWF/DNR/CPRA	
<b>Submit Date:</b> 2012.09.12		<b>State Comments:</b> Agencies concur with point	

Site Information: C9		Location Information	
<b>Name:</b> Western Side of Shark Island	<b>Parish:</b> Iberia	<b>Quad Name:</b> Weeks	
	<b>Quad Number:</b> 2909110		
<b>Priority:</b> C	<b>Mile Marker:</b>		
<b>Site Alias:</b> None	<b>Managed (Y/N)?:</b> N		
<b>Site Description:</b> From Vermillion Bay	<b>Latitude:</b> 29° 45' 40.085" N		
	<b>Longitude:</b> 91° 52' 10.366" W		
Response Considerations			
<b>Site Strategy:</b> Exclusion Booming		<b>Site Strategy Comments:</b>	
<b>Site Waterbody Type:</b> Narrow Tidal Channel			
<b>Current Wave Action:</b> Currents <1 kt			
<b>Waterbody Opening:</b> < 500 ft			
Resources At Risk			
<b>ESI Code:</b> 10A		<b>Resources At Risk Comments:</b> Marshland and fisheries	
<b>ESI Description</b> 10A: Salt- and brackish-water marshes			
Contact Information			
<b>Contact:</b> N/A		<b>Special Contact:</b>	
Site Statistics			
<b>Submitted By</b> Prescott Marshall		<b>State Submitter:</b> DEQ/Iberia Parish/LDWF/DNR/CPRA	
<b>Submit Date:</b> 2012.09.12		<b>State Comments:</b> Agencies concur with point	

# CYPREMORT POINT QUAD

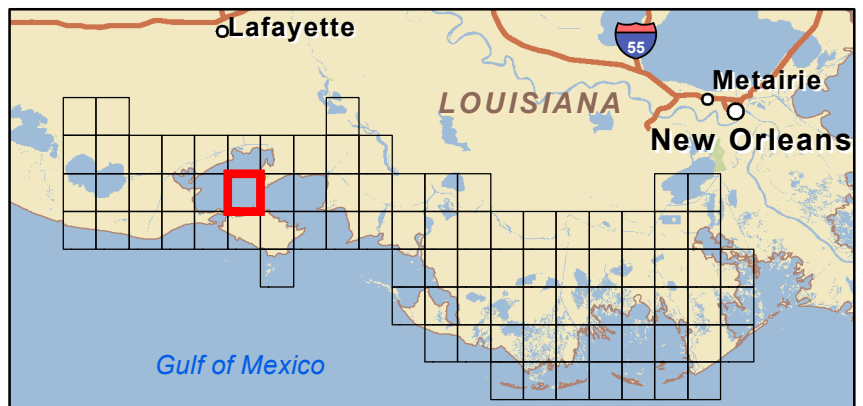


## Legend

- GRP Sites
- Quad Boundaries
- ▭ Parish Boundaries

0 0.5 1 2 3 Kilometers

0 0.5 1 2 3 Miles



Site Information: A1		Location Information	
Name: Cypremort Point Business & Residences		Parish:	St. Mary
		Quad Name:	Cypremort Point
Priority: A		Quad Number:	2909117
Site Alias: Cypremort Point Residential Recreation Area (Submitted by State)		Mile Marker:	
		Managed (Y/N)?: N	
Site Description: Residential/Rec Area		Latitude:	29° 42' 45.634" N
		Longitude:	91° 52' 50.419" W
Response Considerations			
Site Strategy: Exclusion Booming		Site Strategy Comments:	
Site Waterbody Type: Narrow Channel			
Current Wave Action: Currents <1 kt			
Waterbody Opening: < 500 ft			
Resources At Risk			
ESI Code:		Resources At Risk Comments:	
ESI Description			
		Two inlets to be considered	
Contact Information			
Contact: N/A		Special Contact:	
Site Statistics			
Submitted By EOC		State Submitter: DEQ/ St Mary Parish/DNR/CPRA	
Submit Date: 2012.10.01		State Comments: State Concurs with Parish	

Site Information: A2		Location Information	
<b>Name:</b> Bayou Michel	<b>Parish:</b> Iberia	<b>Quad Name:</b> Cypremort Point	
<b>Priority:</b> A	<b>Quad Number:</b> 2909117		
<b>Site Alias:</b> N/A	<b>Mile Marker:</b>		
	<b>Managed (Y/N)?:</b> Y - Wildlife Refuge		
	<b>Latitude:</b> 29° 37' 53.688" N		
<b>Site Description:</b> State Refuge part of Marsh Island Refuge	<b>Longitude:</b> 91° 54' 56.372" W		
Response Considerations			
<b>Site Strategy:</b> Deflection Booming		<b>Site Strategy Comments:</b>	
<b>Site Waterbody Type:</b> Narrow Tidal Channel			
<b>Current Wave Action:</b> Current >1 kt			
<b>Waterbody Opening:</b> < 500 ft			
Resources At Risk			
<b>ESI Code:</b> 10A		<b>Resources At Risk Comments:</b> Sensitive habitat	
<b>ESI Description</b> 10A: Salt- and brackish-water marshes			
Contact Information			
<b>Contact:</b> LDWF		<b>Special Contact:</b>	
Site Statistics			
<b>Submitted By</b> LDWF-DJ Garland and Cassidy Lejeune		<b>State Submitter:</b> LDWF/Lafourche Parish/LDEQ	
<b>Submit Date:</b> 2013.04.16		<b>State Comments:</b>	



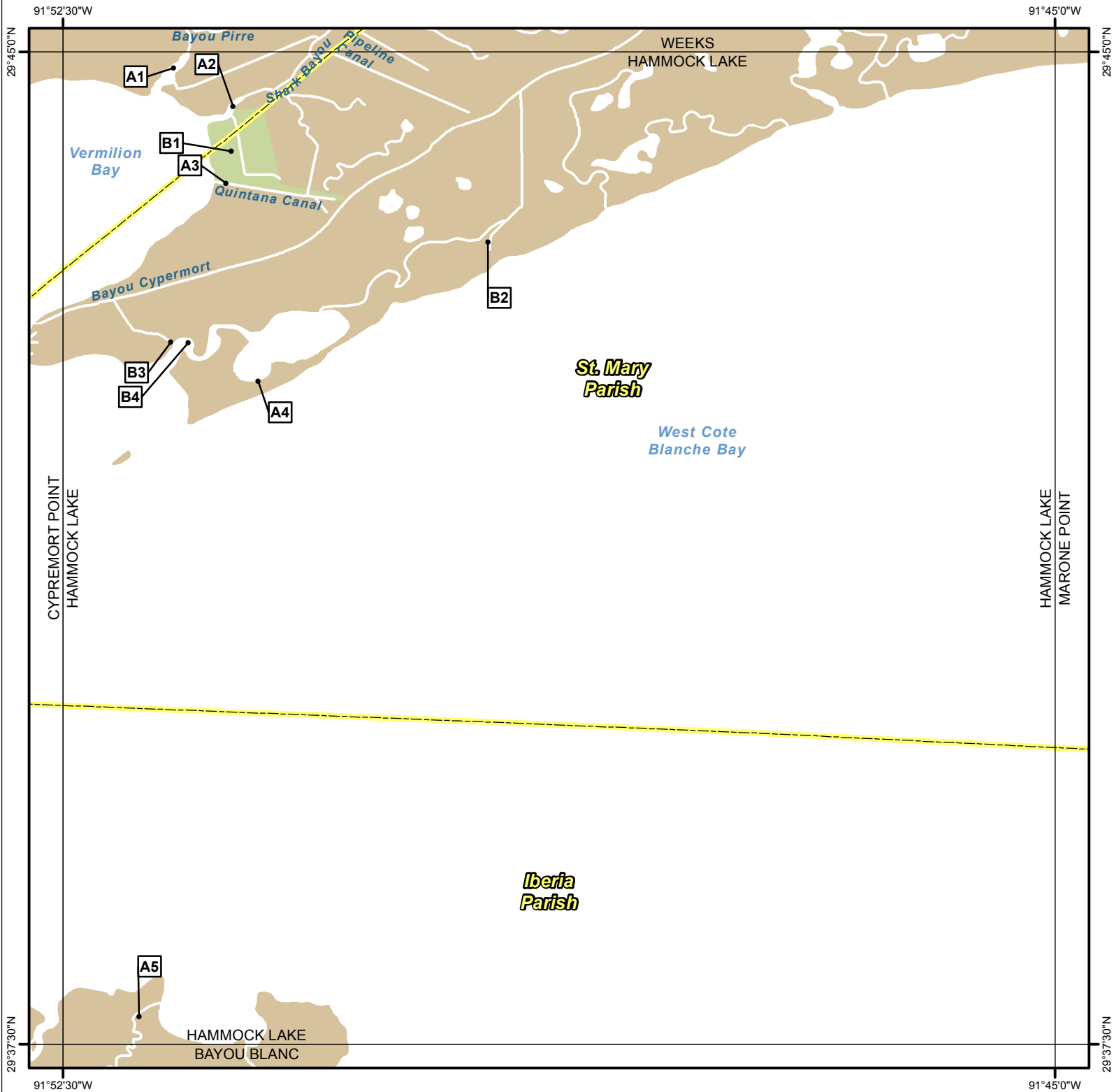
Site Information: A3		Location Information	
<b>Name:</b> Multiple Bayous	<b>Parish:</b> Iberia	<b>Quad Name:</b> Cypremort Point	
<b>Priority:</b> A	<b>Quad Number:</b> 2909117		
<b>Site Alias:</b> N/A	<b>Mile Marker:</b>		
	<b>Managed (Y/N)?:</b> Y - Wildlife Refuge		
	<b>Latitude:</b> 29° 37' 40.759" N		
<b>Site Description:</b> State Refuge part of Marsh Island Refuge	<b>Longitude:</b> 91° 55' 32.247" W		
Response Considerations			
<b>Site Strategy:</b> Exclusion Booming		<b>Site Strategy Comments:</b>	
<b>Site Waterbody Type:</b> Narrow Tidal Channel			
<b>Current Wave Action:</b> Currents <1 kt			
<b>Waterbody Opening:</b> 500-1000 ft			
Resources At Risk			
<b>ESI Code:</b> 10A		<b>Resources At Risk Comments:</b> Sensitive habitat	
<b>ESI Description</b> 10A: Salt- and brackish-water marshes			
Contact Information			
<b>Contact:</b> LDWF		<b>Special Contact:</b>	
Site Statistics			
<b>Submitted By</b> DEQ-Shane Miller and Steve Lorio		<b>State Submitter:</b> DEQ-Shane Miller and Steve Lorio	
<b>Submit Date:</b> 2013.04.16		<b>State Comments:</b> Sensitive Habitat	

Site Information: C1		Location Information	
<b>Name:</b> Entrance to Lucien Bayou from Vermilion Bay	<b>Parish:</b>	Iberia	
	<b>Quad Name:</b>	Cypremort Point	
<b>Priority:</b> C	<b>Quad Number:</b>	2909117	
<b>Site Alias:</b> None  <b>Site Description:</b> State Refuge part of Marsh Island Refuge	<b>Mile Marker:</b>		
	<b>Managed (Y/N)?:</b>	Y - Wildlife Refuge	
	<b>Latitude:</b>	29° 38' 05.334" N	
	<b>Longitude:</b>	91° 54' 06.247" W	
Response Considerations			
<b>Site Strategy:</b> Deflection Booming		<b>Site Strategy Comments:</b>	
<b>Site Waterbody Type:</b> Narrow Tidal Channel			
<b>Current Wave Action:</b> Current >1 kt			
<b>Waterbody Opening:</b> < 500 ft			
Resources At Risk			
<b>ESI Code:</b> 10A		<b>Resources At Risk Comments:</b>	
<b>ESI Description</b> 10A: Salt- and brackish-water marshes			
		Sensitive habitat	
Contact Information			
<b>Contact:</b> LDWF		<b>Special Contact:</b>	
Site Statistics			
<b>Submitted By</b> Prescott Marshall		<b>State Submitter:</b> DEQ/Iberia Parish/LDWF/DNR/CPRA	
<b>Submit Date:</b> 2012.09.12		<b>State Comments:</b> Agencies concur with point	

Site Information: C2		Location Information	
<b>Name:</b> Entrance to Platte Bayou from Vermilion Bay	<b>Parish:</b>	Iberia	
	<b>Quad Name:</b>	Cypremort Point	
<b>Priority:</b> C	<b>Quad Number:</b>	2909117	
<b>Site Alias:</b> None  <b>Site Description:</b> State Refuge part of Marsh Island Refuge	<b>Mile Marker:</b>		
	<b>Managed (Y/N)?:</b>	Y - Wildlife Refuge	
	<b>Latitude:</b>	29° 37' 43.236" N	
	<b>Longitude:</b>	91° 53' 32.074" W	
Response Considerations			
<b>Site Strategy:</b> Deflection Booming		<b>Site Strategy Comments:</b>	
<b>Site Waterbody Type:</b> Narrow Tidal Channel			
<b>Current Wave Action:</b> Current >1 kt			
<b>Waterbody Opening:</b> 500-1000 ft			
Resources At Risk			
<b>ESI Code:</b> 10A		<b>Resources At Risk Comments:</b>  Sensitive habitat	
<b>ESI Description</b> 10A: Salt- and brackish-water marshes			
Contact Information			
<b>Contact:</b> LDWF		<b>Special Contact:</b>	
Site Statistics			
<b>Submitted By</b> Prescott Marshall		<b>State Submitter:</b> DEQ/Iberia Parish/LDWF/DNR/CPRA	
<b>Submit Date:</b> 2012.09.12		<b>State Comments:</b> Agencies concur with point	

Site Information: C3		Location Information	
<b>Name:</b> LDWF Marsh Island Station	<b>Parish:</b>	Iberia	
	<b>Quad Name:</b>	Cypremort Point	
<b>Priority:</b> C	<b>Quad Number:</b>	2909117	
<b>Site Alias:</b> None	<b>Mile Marker:</b>		
	<b>Managed (Y/N)?:</b>	Y - Wildlife Refuge	
	<b>Latitude:</b>	29° 37' 38.264" N	
<b>Site Description:</b> State Refuge part of Marsh Island Refuge	<b>Longitude:</b>	91° 52' 39.850" W	
Response Considerations			
<b>Site Strategy:</b> Diversion Booming to Collection Point		<b>Site Strategy Comments:</b>	
<b>Site Waterbody Type:</b> Narrow Tidal Channel			
<b>Current Wave Action:</b> Current >1 kt			
<b>Waterbody Opening:</b> < 500 ft			
Resources At Risk			
<b>ESI Code:</b> 10A		<b>Resources At Risk Comments:</b>	
<b>ESI Description</b> 10A: Salt- and brackish-water marshes			
		Sensitive habitat	
Contact Information			
<b>Contact:</b> LDWF		<b>Special Contact:</b>	
Site Statistics			
<b>Submitted By</b> Prescott Marshall		<b>State Submitter:</b> DEQ/Iberia Parish/LDWF/DNR/CPRA	
<b>Submit Date:</b> 2012.09.12		<b>State Comments:</b> Agencies concur with point	

# HAMMOCK LAKE QUAD

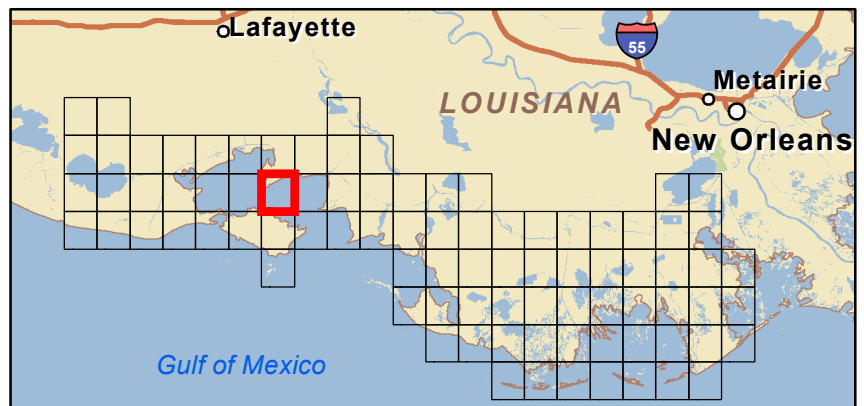


## Legend

- GRP Sites
- Quad Boundaries
- Parish Boundaries

0 0.5 1 2 3 Kilometers

0 0.5 1 2 3 Miles



Site Information: A1		Location Information	
Name: Northwest Cypremort Point Inlet		Parish:	Iberia
		Quad Name:	Hammock Lake
Priority: A		Quad Number:	2909118
Site Alias: N/A		Mile Marker:	
		Managed (Y/N)?: N	
Site Description: Inlet		Latitude:	29° 44' 52.785" N
		Longitude:	91° 51' 40.031" W
Response Considerations			
Site Strategy: Deflection Booming		Site Strategy Comments:	
Site Waterbody Type: Narrow Tidal Channel			
Current Wave Action: Current >1 kt			
Waterbody Opening: < 500 ft			
Resources At Risk			
ESI Code: 10D		Resources At Risk Comments:	
ESI Description 10D: Scrub-shrub wetlands			
Contact Information			
Contact: N/A		Special Contact:	
Site Statistics			
Submitted By DNR/CPRA		State Submitter: DNR/CPRA	
Submit Date: 2013.04.16		State Comments:	

Site Information: A2		Location Information	
Name: Shark Bayou	Parish:	Iberia	
	Quad Name:	Hammock Lake	
Priority: A	Quad Number:	2909118	
Site Alias: N/A	Mile Marker:		
	Managed (Y/N)?:	N	
Site Description: Inlet	Latitude:	29° 44' 35.583" N	
	Longitude:	91° 51' 12.848" W	
Response Considerations			
Site Strategy: Diversion Booming to Collection Point		Site Strategy Comments:	
Site Waterbody Type: Narrow Tidal Channel			
Current Wave Action: Current >1 kt			
Waterbody Opening: 500-1000 ft			
Resources At Risk			
ESI Code: 10A		Resources At Risk Comments:	
ESI Description 10A: Salt- and brackish-water marshes			
Contact Information			
Contact: N/A		Special Contact:	
Site Statistics			
Submitted By DNR/CPRA		State Submitter: DNR/CPRA	
Submit Date: 2013.04.16		State Comments:	

Site Information: A3		Location Information	
Name: Quintana Canal		Parish:	St. Mary
		Quad Name:	Hammock Lake
Priority:	A	Quad Number:	2909118
Site Alias: None		Mile Marker:	
		Managed (Y/N)?:	Y - Wildlife Area
Site Description: Cypremort Pt. State Park		Latitude:	29° 44' 00.545" N
		Longitude:	91° 51' 16.243" W
Response Considerations			
Site Strategy: Exclusion Booming		Site Strategy Comments:	
Site Waterbody Type: Narrow Tidal Channel			
Current Wave Action: Currents <1 kt			
Waterbody Opening: < 500 ft			
Resources At Risk			
ESI Code: 10A		Resources At Risk Comments:	
ESI Description 10A: Salt- and brackish-water marshes			
		State Park	
Contact Information			
Contact: N/A		Special Contact:	
Site Statistics			
Submitted By EOC		State Submitter: DEQ/ St Mary Parish/DNR/CPRA	
Submit Date: 2012.10.01		State Comments: State Concurs with Parish	



Site Information: A4		Location Information	
<b>Name:</b> Mouth of Hammock Lake (south)	<b>Parish:</b> St. Mary		
	<b>Quad Name:</b> Hammock Lake		
<b>Priority:</b> A	<b>Quad Number:</b> 2909118		
<b>Site Alias:</b> Franklin Canal at ICW (Submitted by State)	<b>Mile Marker:</b>		
	<b>Managed (Y/N)?:</b> N		
<b>Site Description:</b> Sensitive Habitat	<b>Latitude:</b> 29° 42' 30.928" N		
	<b>Longitude:</b> 91° 51' 01.618" W		
<b>Response Considerations</b>			
<b>Site Strategy:</b> Deferred Action	<b>Site Strategy Comments:</b>		
<b>Site Waterbody Type:</b> Entrance to Bays, etc			
<b>Current Wave Action:</b> Breaking Waves >1.5 ft			
<b>Waterbody Opening:</b> 500-1000 ft			
<b>Resources At Risk</b>			
<b>ESI Code:</b> 10A	<b>Resources At Risk Comments:</b> Sensitive Habitat		
<b>ESI Description</b> 10A: Salt- and brackish-water marshes			
<b>Contact Information</b>			
<b>Contact:</b> N/A	<b>Special Contact:</b>		
<b>Site Statistics</b>			
<b>Submitted By</b> EOC	<b>State Submitter:</b> DEQ/ St Mary Parish/DNR/CPRA		
<b>Submit Date:</b> 2012.10.01	<b>State Comments:</b> State Concurs with Parish		

Site Information: A5		Location Information	
<b>Name:</b> West Joe Aucoin Bayou		<b>Parish:</b>	Iberia
		<b>Quad Name:</b>	Hammock Lake
<b>Priority:</b> A		<b>Quad Number:</b>	2909118
<b>Site Alias:</b> N/A  <b>Site Description:</b> State Refuge part of Marsh Island Refuge		<b>Mile Marker:</b>	
		<b>Managed (Y/N)?:</b> Y - Wildlife Refuge	
		<b>Latitude:</b>	29° 37' 42.548" N
		<b>Longitude:</b>	91° 51' 55.569" W
Response Considerations			
<b>Site Strategy:</b> Diversion Booming to Collection Point		<b>Site Strategy Comments:</b>	
<b>Site Waterbody Type:</b> Narrow Tidal Channel			
<b>Current Wave Action:</b> Current >1 kt			
<b>Waterbody Opening:</b> < 500 ft			
Resources At Risk			
<b>ESI Code:</b> 10A		<b>Resources At Risk Comments:</b>  Sensitive Habitat	
<b>ESI Description</b> 10A: Salt- and brackish-water marshes			
Contact Information			
<b>Contact:</b> LDWF		<b>Special Contact:</b>	
Site Statistics			
<b>Submitted By</b> LDWF-DJ Garland and Cassidy Lejeune		<b>State Submitter:</b> LDWF/Lafourche Parish	
<b>Submit Date:</b> 2013.04.16		<b>State Comments:</b>	

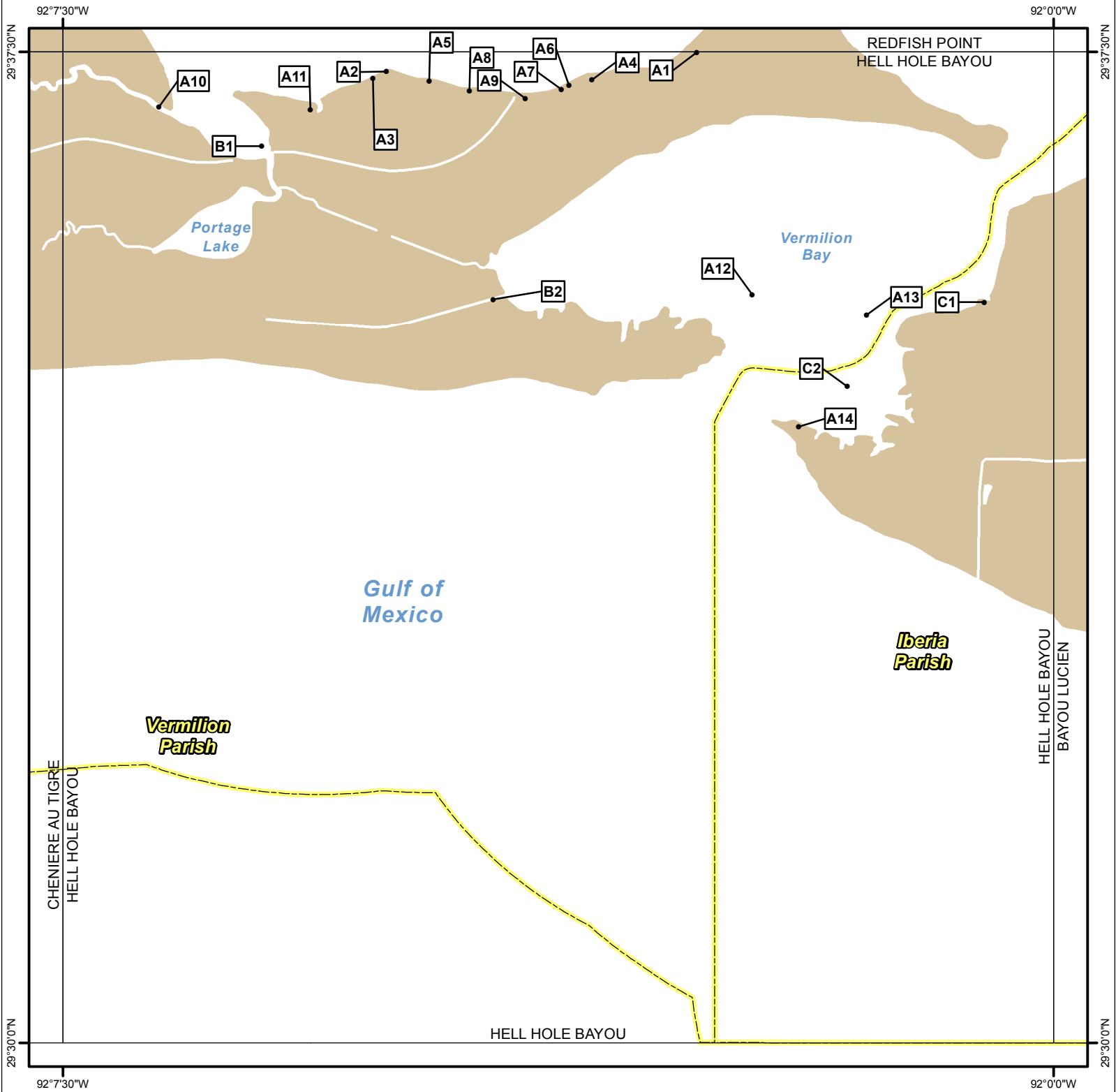
Site Information: B1		Location Information	
<b>Name:</b> Cypremort Point State Recreation Area		<b>Parish:</b>	St. Mary
		<b>Quad Name:</b>	Hammock Lake
<b>Priority:</b> B		<b>Quad Number:</b>	2909118
<b>Site Alias:</b> N/A		<b>Mile Marker:</b>	
		<b>Managed (Y/N)?:</b> N	
<b>Site Description:</b> State park/recreation area		<b>Latitude:</b>	29° 44' 15.018" N
		<b>Longitude:</b>	91° 51' 13.732" W
Response Considerations			
<b>Site Strategy:</b> Deferred Action		<b>Site Strategy Comments:</b>	
<b>Site Waterbody Type:</b> Straight Coastline			
<b>Current Wave Action:</b> Breaking Waves >1.5 ft			
<b>Waterbody Opening:</b> Not Applicable			
Resources At Risk			
<b>ESI Code:</b> 10A		<b>Resources At Risk Comments:</b>	
<b>ESI Description</b> 10A: Salt- and brackish-water marshes			
Contact Information			
<b>Contact:</b> N/A		<b>Special Contact:</b>	
Site Statistics			
<b>Submitted By</b> Preexisting Parish Assessment		<b>State Submitter:</b> DEQ/St. Mary Parish/DNR/CPRA	
<b>Submit Date:</b> 2012.03.13		<b>State Comments:</b> Point is in question by State	

Site Information: B2		Location Information	
Name: Inlet near Prince Lake		Parish:	St. Mary
		Quad Name:	Hammock Lake
Priority: B		Quad Number:	2909118
Site Alias: None		Mile Marker:	
		Managed (Y/N)?: N	
Site Description: Marshland		Latitude:	29° 43' 33.878" N
		Longitude:	91° 49' 17.366" W
Response Considerations			
Site Strategy: Exclusion Booming		Site Strategy Comments:	
Site Waterbody Type: Narrow Tidal Channel			
Current Wave Action: Currents <1 kt			
Waterbody Opening: < 500 ft			
Resources At Risk			
ESI Code: 10A		Resources At Risk Comments:	
ESI Description 10A: Salt- and brackish-water marshes			
		Marshland	
Contact Information			
Contact: N/A		Special Contact:	
Site Statistics			
Submitted By Duval Arthur St Mary OEP		State Submitter: DEQ/ St Mary Parish/DNR/CPRA	
Submit Date: 2012.10.01		State Comments: State Concurs with Parish	

Site Information: B3		Location Information	
<b>Name:</b> Mouth of Hammock Bayou (north)		<b>Parish:</b>	St. Mary
		<b>Quad Name:</b>	Hammock Lake
<b>Priority:</b> B		<b>Quad Number:</b>	2909118
<b>Site Alias:</b> None		<b>Mile Marker:</b>	
		<b>Managed (Y/N)?:</b> N	
<b>Site Description:</b> Sensitive Habitat		<b>Latitude:</b>	29° 42' 48.316" N
		<b>Longitude:</b>	91° 51' 41.177" W
Response Considerations			
<b>Site Strategy:</b> Deflection Booming		<b>Site Strategy Comments:</b>	
<b>Site Waterbody Type:</b> Narrow Tidal Channel			
<b>Current Wave Action:</b> Current >1 kt			
<b>Waterbody Opening:</b> < 500 ft			
Resources At Risk			
<b>ESI Code:</b> 10A		<b>Resources At Risk Comments:</b>	
<b>ESI Description</b> 10A: Salt- and brackish-water marshes			
Contact Information			
<b>Contact:</b> N/A		<b>Special Contact:</b>	
Site Statistics			
<b>Submitted By</b> Preexisting Parish Assessment		<b>State Submitter:</b> DEQ/ St Mary Parish/DNR/CPRA	
<b>Submit Date:</b> 2012.03.13		<b>State Comments:</b> State Concurs with Parish	

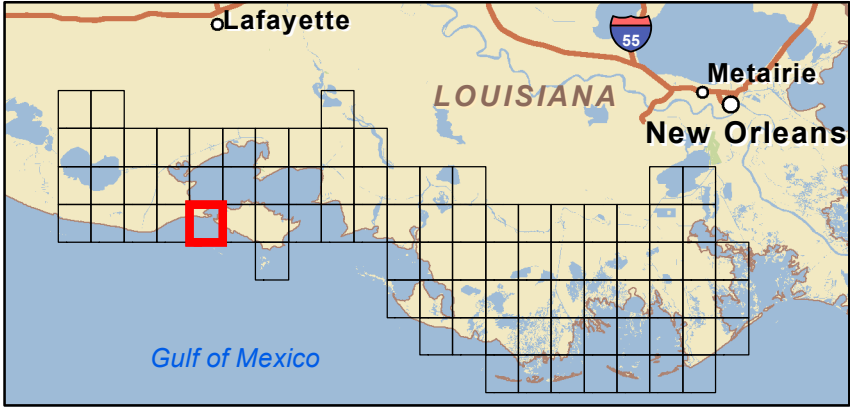
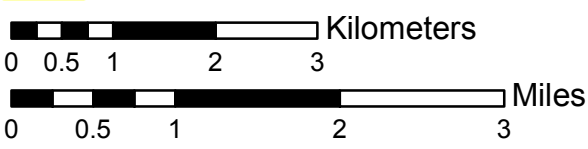
Site Information: B4		Location Information	
<b>Name:</b> Mouth of Hammock Bayou (central)	<b>Parish:</b> St. Mary	<b>Quad Name:</b> Hammock Lake	
<b>Priority:</b> B	<b>Quad Number:</b> 2909118		
<b>Site Alias:</b> None	<b>Mile Marker:</b>		
	<b>Managed (Y/N)?:</b> N		
	<b>Latitude:</b> 29° 42' 48.082" N		
<b>Site Description:</b> Two inlets to be considered	<b>Longitude:</b> 91° 51' 33.307" W		
Response Considerations			
<b>Site Strategy:</b> Deflection Booming		<b>Site Strategy Comments:</b>	
<b>Site Waterbody Type:</b> Narrow Tidal Channel			
<b>Current Wave Action:</b> Current >1 kt			
<b>Waterbody Opening:</b> < 500 ft			
Resources At Risk			
<b>ESI Code:</b> 10A		<b>Resources At Risk Comments:</b>	
<b>ESI Description</b> 10A: Salt- and brackish-water marshes			
Contact Information			
<b>Contact:</b> N/A		<b>Special Contact:</b>	
Site Statistics			
<b>Submitted By</b> EOC		<b>State Submitter:</b> DEQ/ St Mary Parish/DNR/CPRA	
<b>Submit Date:</b> 2012.10.01		<b>State Comments:</b> State Concurs with Parish	

# HELL HOLE BAYOU QUAD



## Legend

- GRP Sites
- Quad Boundaries
- Parish Boundaries



Site Information: A1		Location Information	
<b>Name:</b> Bayou 10 south Vermilion Bay	<b>Parish:</b>	Vermilion	
	<b>Quad Name:</b>	Hell Hole Bayou	
<b>Priority:</b> A	<b>Quad Number:</b>	2909232	
<b>Site Alias:</b> N/A	<b>Mile Marker:</b>		
	<b>Managed (Y/N)?:</b>	N	
	<b>Latitude:</b>	29° 37' 29.830" N	
<b>Site Description:</b> Sensitive Habitat	<b>Longitude:</b>	92° 02' 42.114" W	
Response Considerations			
<b>Site Strategy:</b> Exclusion Booming		<b>Site Strategy Comments:</b>	
<b>Site Waterbody Type:</b> Narrow Tidal Channel			
<b>Current Wave Action:</b> Currents <1 kt			
<b>Waterbody Opening:</b> < 500 ft			
Resources At Risk			
<b>ESI Code:</b> 10A		<b>Resources At Risk Comments:</b>	
<b>ESI Description</b> 10A: Salt- and brackish-water marshes			
		Sensitive Habitat	
Contact Information			
<b>Contact:</b> National Audubon Society		<b>Special Contact:</b>	
Site Statistics			
<b>Submitted By</b> DEQ-Shane Miller and Steve Lorio		<b>State Submitter:</b> DEQ-Shane Miller and Steve Lorio	
<b>Submit Date:</b> 2013.04.16		<b>State Comments:</b> Sensitive Habitat	



Site Information: A2		Location Information	
<b>Name:</b> Bayou 03 south Vermilion Bay	<b>Parish:</b>	Vermilion	
	<b>Quad Name:</b>	Hell Hole Bayou	
<b>Priority:</b> A	<b>Quad Number:</b>	2909232	
<b>Site Alias:</b> N/A	<b>Mile Marker:</b>		
	<b>Managed (Y/N)?:</b>	Y - Wildlife Refuge	
	<b>Latitude:</b>	29° 37' 21.103" N	
<b>Site Description:</b> State Area part of State Wildlife Refuge	<b>Longitude:</b>	92° 05' 03.173" W	
Response Considerations			
<b>Site Strategy:</b> Exclusion Booming		<b>Site Strategy Comments:</b>	
<b>Site Waterbody Type:</b> Narrow Tidal Channel			
<b>Current Wave Action:</b> Currents <1 kt			
<b>Waterbody Opening:</b> < 500 ft			
Resources At Risk			
<b>ESI Code:</b> 10A		<b>Resources At Risk Comments:</b>	
<b>ESI Description</b> 10A: Salt- and brackish-water marshes			
		Sensitive Habitat	
Contact Information			
<b>Contact:</b> LDWF		<b>Special Contact:</b>	
Site Statistics			
<b>Submitted By</b> DEQ-Shane Miller and Steve Lorio		<b>State Submitter:</b> DEQ-Shane Miller and Steve Lorio	
<b>Submit Date:</b> 2013.04.16		<b>State Comments:</b> Sensitive Habitat	

Site Information: A3		Location Information	
<b>Name:</b> Bayou 02 south Vermilion Bay	<b>Parish:</b>	Vermilion	
	<b>Quad Name:</b>	Hell Hole Bayou	
<b>Priority:</b> A	<b>Quad Number:</b>	2909232	
<b>Site Alias:</b> N/A	<b>Mile Marker:</b>		
	<b>Managed (Y/N)?:</b>	Y - Wildlife Refuge	
	<b>Latitude:</b>	29° 37' 18.113" N	
<b>Site Description:</b> State Area part of State Wildlife Refuge	<b>Longitude:</b>	92° 05' 09.151" W	
Response Considerations			
<b>Site Strategy:</b> Exclusion Booming	<b>Site Strategy Comments:</b>		
<b>Site Waterbody Type:</b> Narrow Tidal Channel			
<b>Current Wave Action:</b> Currents <1 kt			
<b>Waterbody Opening:</b> < 500 ft			
Resources At Risk			
<b>ESI Code:</b> 10A	<b>Resources At Risk Comments:</b> Sensitive Habitat		
<b>ESI Description</b> 10A: Salt- and brackish-water marshes			
Contact Information			
<b>Contact:</b> LDWF	<b>Special Contact:</b>		
Site Statistics			
<b>Submitted By</b> DEQ-Shane Miller and Steve Lorio	<b>State Submitter:</b> DEQ-Shane Miller and Steve Lorio		
<b>Submit Date:</b> 2013.04.16	<b>State Comments:</b> Sensitive Habitat		

Site Information: A4		Location Information	
<b>Name:</b> Bayou 09 south Vermilion Bay	<b>Parish:</b>	Vermilion	
	<b>Quad Name:</b>	Hell Hole Bayou	
<b>Priority:</b> A	<b>Quad Number:</b>	2909232	
<b>Site Alias:</b> N/A	<b>Mile Marker:</b>		
	<b>Managed (Y/N)?:</b>	Y - Wildlife Refuge	
	<b>Latitude:</b>	29° 37' 17.254" N	
<b>Site Description:</b> State Area part of State Wildlife Refuge	<b>Longitude:</b>	92° 03' 29.758" W	
Response Considerations			
<b>Site Strategy:</b> Exclusion Booming	<b>Site Strategy Comments:</b>		
<b>Site Waterbody Type:</b> Narrow Tidal Channel			
<b>Current Wave Action:</b> Currents <1 kt			
<b>Waterbody Opening:</b> < 500 ft			
Resources At Risk			
<b>ESI Code:</b> 10A	<b>Resources At Risk Comments:</b> Sensitive Habitat		
<b>ESI Description</b> 10A: Salt- and brackish-water marshes			
Contact Information			
<b>Contact:</b> LDWF	<b>Special Contact:</b>		
Site Statistics			
<b>Submitted By</b> DEQ-Shane Miller and Steve Lorio	<b>State Submitter:</b> DEQ-Shane Miller and Steve Lorio		
<b>Submit Date:</b> 2013.04.16	<b>State Comments:</b> Sensitive Habitat		

Site Information: A5		Location Information	
Name: Bayou 04 south Vermilion Bay		Parish:	Vermilion
		Quad Name:	Hell Hole Bayou
Priority:	A	Quad Number:	2909232
Site Alias: N/A		Mile Marker:	
		Managed (Y/N)?: Y - Wildlife Refuge	
		Latitude:	29° 37' 16.741" N
Site Description: State Area part of State Wildlife Refuge		Longitude:	92° 04' 43.707" W
Response Considerations			
Site Strategy: Deflection Booming		Site Strategy Comments:	
Site Waterbody Type: Narrow Tidal Channel			
Current Wave Action: Current >1 kt			
Waterbody Opening: < 500 ft			
Resources At Risk			
ESI Code: 10A		Resources At Risk Comments:	
ESI Description 10A: Salt- and brackish-water marshes			
		Sensitive Habitat	
Contact Information			
Contact: LDWF		Special Contact:	
Site Statistics			
Submitted By DEQ-Shane Miller and Steve Lorio		State Submitter: DEQ-Shane Miller and Steve Lorio	
Submit Date: 2013.04.16		State Comments: Sensitive Habitat	

Site Information: A6		Location Information	
<b>Name:</b> Bayou 08 south Vermilion Bay	<b>Parish:</b>	Vermilion	
	<b>Quad Name:</b>	Hell Hole Bayou	
<b>Priority:</b> A	<b>Quad Number:</b>	2909232	
<b>Site Alias:</b> N/A	<b>Mile Marker:</b>		
	<b>Managed (Y/N)?:</b>	Y - Wildlife Refuge	
	<b>Latitude:</b>	29° 37' 14.942" N	
<b>Site Description:</b> State Area part of State Wildlife Refuge	<b>Longitude:</b>	92° 03' 40.152" W	
Response Considerations			
<b>Site Strategy:</b> Exclusion Booming	<b>Site Strategy Comments:</b>		
<b>Site Waterbody Type:</b> Narrow Tidal Channel			
<b>Current Wave Action:</b> Currents <1 kt			
<b>Waterbody Opening:</b> < 500 ft			
Resources At Risk			
<b>ESI Code:</b> 10A	<b>Resources At Risk Comments:</b> Sensitive Habitat		
<b>ESI Description</b> 10A: Salt- and brackish-water marshes			
Contact Information			
<b>Contact:</b> LDWF	<b>Special Contact:</b>		
Site Statistics			
<b>Submitted By</b> DEQ-Shane Miller and Steve Lorio	<b>State Submitter:</b> DEQ-Shane Miller and Steve Lorio		
<b>Submit Date:</b> 2013.04.16	<b>State Comments:</b> Sensitive Habitat		

Site Information: A7		Location Information	
<b>Name:</b> Bayou 07 south Vermilion Bay	<b>Parish:</b>	Vermilion	
	<b>Quad Name:</b>	Hell Hole Bayou	
<b>Priority:</b> A	<b>Quad Number:</b>	2909232	
<b>Site Alias:</b> N/A	<b>Mile Marker:</b>		
	<b>Managed (Y/N)?:</b>	Y - Wildlife Refuge	
	<b>Latitude:</b>	29° 37' 12.956" N	
<b>Site Description:</b> State Area part of State Wildlife Refuge	<b>Longitude:</b>	92° 03' 43.551" W	
Response Considerations			
<b>Site Strategy:</b> Exclusion Booming		<b>Site Strategy Comments:</b>	
<b>Site Waterbody Type:</b> Narrow Tidal Channel			
<b>Current Wave Action:</b> Currents <1 kt			
<b>Waterbody Opening:</b> < 500 ft			
Resources At Risk			
<b>ESI Code:</b> 10A		<b>Resources At Risk Comments:</b> Sensitive Habitat	
<b>ESI Description</b> 10A: Salt- and brackish-water marshes			
Contact Information			
<b>Contact:</b> LDWF		<b>Special Contact:</b>	
Site Statistics			
<b>Submitted By</b> DEQ-Shane Miller and Steve Lorio		<b>State Submitter:</b> DEQ-Shane Miller and Steve Lorio	
<b>Submit Date:</b> 2013.04.16		<b>State Comments:</b> Sensitive Habitat	

Site Information: A8		Location Information	
<b>Name:</b> Bayou 05 south Vermilion Bay		<b>Parish:</b>	Vermilion
		<b>Quad Name:</b>	Hell Hole Bayou
<b>Priority:</b> A		<b>Quad Number:</b>	2909232
<b>Site Alias:</b> N/A  <b>Site Description:</b> State Area part of State Wildlife Refuge		<b>Mile Marker:</b>	
		<b>Managed (Y/N)?:</b> Y - Wildlife Refuge	
		<b>Latitude:</b>	29° 37' 12.349" N
		<b>Longitude:</b>	92° 04' 25.394" W
Response Considerations			
<b>Site Strategy:</b> Deflection Booming		<b>Site Strategy Comments:</b>	
<b>Site Waterbody Type:</b> Narrow Tidal Channel			
<b>Current Wave Action:</b> Current >1 kt			
<b>Waterbody Opening:</b> < 500 ft			
Resources At Risk			
<b>ESI Code:</b> 10A		<b>Resources At Risk Comments:</b>  Sensitive Habitat	
<b>ESI Description</b> 10A: Salt- and brackish-water marshes			
Contact Information			
<b>Contact:</b> LDWF		<b>Special Contact:</b>	
Site Statistics			
<b>Submitted By</b> DEQ-Shane Miller and Steve Lorio		<b>State Submitter:</b> DEQ-Shane Miller and Steve Lorio	
<b>Submit Date:</b> 2013.04.16		<b>State Comments:</b> Sensitive Habitat	

Site Information: A9		Location Information	
<b>Name:</b> Bayou 06 south Vermilion Bay	<b>Parish:</b>	Vermilion	
	<b>Quad Name:</b>	Hell Hole Bayou	
<b>Priority:</b> A	<b>Quad Number:</b>	2909232	
<b>Site Alias:</b> N/A	<b>Mile Marker:</b>		
	<b>Managed (Y/N)?:</b>	N	
	<b>Latitude:</b>	29° 37' 09.000" N	
<b>Site Description:</b> Sensitive Habitat	<b>Longitude:</b>	92° 04' 00.076" W	
Response Considerations			
<b>Site Strategy:</b> Exclusion Booming		<b>Site Strategy Comments:</b>	
<b>Site Waterbody Type:</b> Narrow Tidal Channel			
<b>Current Wave Action:</b> Currents <1 kt			
<b>Waterbody Opening:</b> < 500 ft			
Resources At Risk			
<b>ESI Code:</b> 10A		<b>Resources At Risk Comments:</b>	
<b>ESI Description</b> 10A: Salt- and brackish-water marshes			
		Sensitive Habitat	
Contact Information			
<b>Contact:</b> N/A		<b>Special Contact:</b>	
Site Statistics			
<b>Submitted By</b> DEQ-Shane Miller and Steve Lorio		<b>State Submitter:</b> DEQ-Shane Miller and Steve Lorio	
<b>Submit Date:</b> 2013.04.16		<b>State Comments:</b> Sensitive Habitat	



Site Information: A10		Location Information	
<b>Name:</b> Hog Bayou Inlet at Vermilion Bay	<b>Parish:</b>	Vermilion	
	<b>Quad Name:</b>	Hell Hole Bayou	
<b>Priority:</b> A	<b>Quad Number:</b>	2909232	
<b>Site Alias:</b> N/A	<b>Mile Marker:</b>		
	<b>Managed (Y/N)?:</b>	Y - Wildlife Refuge	
	<b>Latitude:</b>	29° 37' 05.124" N	
<b>Site Description:</b> State Area part of State Wildlife Refuge	<b>Longitude:</b>	92° 06' 46.363" W	
Response Considerations			
<b>Site Strategy:</b> Deflection Booming		<b>Site Strategy Comments:</b>	
<b>Site Waterbody Type:</b> Narrow Tidal Channel			
<b>Current Wave Action:</b> Current >1 kt			
<b>Waterbody Opening:</b> < 500 ft			
Resources At Risk			
<b>ESI Code:</b> 10A		<b>Resources At Risk Comments:</b>	
<b>ESI Description</b> 10A: Salt- and brackish-water marshes			
		Sensitive habitat	
Contact Information			
<b>Contact:</b> LDWF		<b>Special Contact:</b>	
Site Statistics			
<b>Submitted By</b> LDWF-DJ Garland and Cassidy Lejeune		<b>State Submitter:</b> LDWF/Lafourche Parish	
<b>Submit Date:</b> 2013.04.16		<b>State Comments:</b>	

Site Information: A11		Location Information	
<b>Name:</b> Bayou 01 south Vermilion Bay	<b>Parish:</b>	Vermilion	
	<b>Quad Name:</b>	Hell Hole Bayou	
<b>Priority:</b> A	<b>Quad Number:</b>	2909232	
<b>Site Alias:</b> N/A	<b>Mile Marker:</b>		
	<b>Managed (Y/N)?:</b>	Y - Wildlife Refuge	
	<b>Latitude:</b>	29° 37' 03.855" N	
<b>Site Description:</b> State Area part of State Wildlife Refuge	<b>Longitude:</b>	92° 05' 37.623" W	
Response Considerations			
<b>Site Strategy:</b> Deflection Booming		<b>Site Strategy Comments:</b>	
<b>Site Waterbody Type:</b> Narrow Tidal Channel			
<b>Current Wave Action:</b> Current >1 kt			
<b>Waterbody Opening:</b> < 500 ft			
Resources At Risk			
<b>ESI Code:</b> 10A		<b>Resources At Risk Comments:</b> Sensitive Habitat	
<b>ESI Description</b> 10A: Salt- and brackish-water marshes			
Contact Information			
<b>Contact:</b> LDWF		<b>Special Contact:</b>	
Site Statistics			
<b>Submitted By</b> DEQ-Shane Miller and Steve Lorio		<b>State Submitter:</b> DEQ-Shane Miller and Steve Lorio	
<b>Submit Date:</b> 2013.04.16		<b>State Comments:</b> Sensitive Habitat	

Site Information: A12		Location Information	
<b>Name:</b> Bird Rookery SW Pass	<b>Parish:</b> Vermilion	<b>Quad Name:</b> Hell Hole Bayou	
<b>Priority:</b> A	<b>Quad Number:</b> 2909232		
<b>Site Alias:</b> None	<b>Mile Marker:</b>		
	<b>Managed (Y/N)?:</b> N		
	<b>Latitude:</b> 29° 35' 39.893" N		
<b>Site Description:</b> Wading bird rookery	<b>Longitude:</b> 92° 02' 16.964" W		
Response Considerations			
<b>Site Strategy:</b> Deferred Action		<b>Site Strategy Comments:</b>	
<b>Site Waterbody Type:</b> Straight Coastline			
<b>Current Wave Action:</b> Breaking Waves >1.5 ft			
<b>Waterbody Opening:</b> Not Applicable			
Resources At Risk			
<b>ESI Code:</b> 10D		<b>Resources At Risk Comments:</b>	
<b>ESI Description</b> 10D: Scrub-shrub wetlands			
		Wading bird rookery	
Contact Information			
<b>Contact:</b> National Audubon Society		<b>Special Contact:</b>	
Site Statistics			
<b>Submitted By</b> Preexisting Parish Assessment		<b>State Submitter:</b> DEQ/Vermilion Parish/LDWF/DNR/CPRA	
<b>Submit Date:</b> 2012.03.13		<b>State Comments:</b> Agencies Concur with point	

Site Information: A13		Location Information	
<b>Name:</b> Shell Reefs SW Pass / Island in Vermilion Bay	<b>Parish:</b>	Vermilion	
	<b>Quad Name:</b>	Hell Hole Bayou	
<b>Priority:</b> A	<b>Quad Number:</b>	2909232	
<b>Site Alias:</b> N/A	<b>Mile Marker:</b>		
	<b>Managed (Y/N)?:</b>	N	
	<b>Latitude:</b>	29° 35' 30.588" N	
<b>Site Description:</b> Bird nesting area	<b>Longitude:</b>	92° 01' 24.911" W	
Response Considerations			
<b>Site Strategy:</b> Deferred Action		<b>Site Strategy Comments:</b>	
<b>Site Waterbody Type:</b> Straight Coastline			
<b>Current Wave Action:</b> Breaking Waves >1.5 ft			
<b>Waterbody Opening:</b> Not Applicable			
Resources At Risk			
<b>ESI Code:</b> 10A		<b>Resources At Risk Comments:</b> Loafing and nesting area for a variety of bird species	
<b>ESI Description</b> 10A: Salt- and brackish-water marshes			
Contact Information			
<b>Contact:</b> LDWF		<b>Special Contact:</b>	
Site Statistics			
<b>Submitted By</b> LDWF-DJ Garland and Cassidy Lejeune		<b>State Submitter:</b> LDWF/Lafourche Parish	
<b>Submit Date:</b> 2013.04.16		<b>State Comments:</b>	

Site Information: A14		Location Information	
Name: Lighthouse Point / Island		Parish:	Iberia
		Quad Name:	Hell Hole Bayou
Priority:	A	Quad Number:	2909232
Site Alias: N/A		Mile Marker:	
		Managed (Y/N)?: Y - Wildlife Refuge	
		Latitude:	29° 34' 39.766" N
Site Description: State Refuge part of Marsh Island Refuge		Longitude:	92° 01' 55.797" W
Response Considerations			
Site Strategy: Deferred Action		Site Strategy Comments:	
Site Waterbody Type: Straight Coastline			
Current Wave Action: Breaking Waves >1.5 ft			
Waterbody Opening: Not Applicable			
Resources At Risk			
ESI Code: 6A		Resources At Risk Comments:	
ESI Description 6A: Gravel beaches			
		Tern nesting area	
Contact Information			
Contact: LDWF		Special Contact:	
Site Statistics			
Submitted By LDWF-DJ Garland and Cassidy Lejeune		State Submitter: LDWF/Lafourche Parish	
Submit Date: 2013.04.16		State Comments:	

Site Information: B1		Location Information	
<b>Name:</b> Portage Lake Primary Inlet		<b>Parish:</b>	Vermilion
		<b>Quad Name:</b>	Hell Hole Bayou
<b>Priority:</b> B		<b>Quad Number:</b>	2909232
<b>Site Alias:</b> None		<b>Mile Marker:</b>	
		<b>Managed (Y/N)?:</b> Y - Wildlife Refuge	
		<b>Latitude:</b>	29° 36' 47.325" N
<b>Site Description:</b> State Area part of State Wildlife Refuge		<b>Longitude:</b>	92° 05' 59.802" W
Response Considerations			
<b>Site Strategy:</b> Deflection Booming		<b>Site Strategy Comments:</b>	
<b>Site Waterbody Type:</b> Narrow Tidal Channel			
<b>Current Wave Action:</b> Current >1 kt			
<b>Waterbody Opening:</b> < 500 ft			
Resources At Risk			
<b>ESI Code:</b> 10A		<b>Resources At Risk Comments:</b> Sensitive habitat / Paul J. Rainey Sanctuary	
<b>ESI Description</b> 10A: Salt- and brackish-water marshes			
Contact Information			
<b>Contact:</b> LDWF		<b>Special Contact:</b>	
Site Statistics			
<b>Submitted By</b> Rebecca Broussard		<b>State Submitter:</b> DEQ/Vermilion Parish/LDWF/DNR/CPRA	
<b>Submit Date:</b> 2012.09.12		<b>State Comments:</b> Agencies Concur with point	

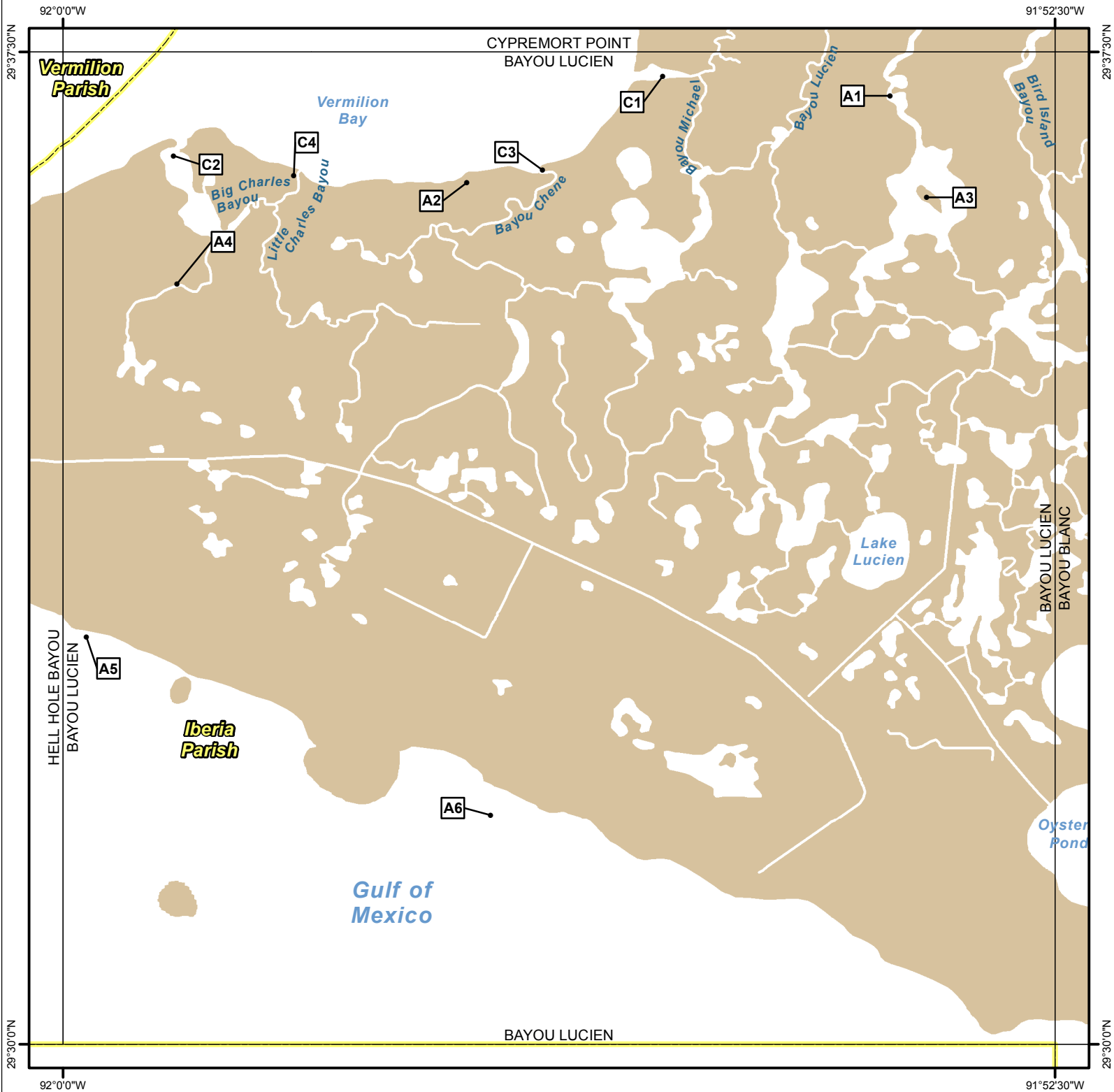
Site Information: B2		Location Information	
Name: Canal		Parish: Vermilion	
		Quad Name: Hell Hole Bayou	
Priority: B		Quad Number: 2909232	
Site Alias: None		Mile Marker:	
		Managed (Y/N)?: Y - Wildlife Area	
Site Description: Primary Inlet		Latitude: 29° 35' 37.552" N	
		Longitude: 92° 04' 14.608" W	
Response Considerations			
Site Strategy: Exclusion Booming		Site Strategy Comments:	
Site Waterbody Type: Narrow Tidal Channel			
Current Wave Action: Currents <1 kt			
Waterbody Opening: < 500 ft			
Resources At Risk			
ESI Code: 10A		Resources At Risk Comments: Paul Rainey Sanctuary	
ESI Description 10A: Salt- and brackish-water marshes			
Contact Information			
Contact: National Audubon Society		Special Contact:	
Site Statistics			
Submitted By Rebecca Broussard		State Submitter: DEQ/Vermilion Parish/LDWF/DNR/CPRA	
Submit Date: 2012.09.12		State Comments: Agencies Concur with point	

Site Information: C1		Location Information	
Name: Shell Reefs SW Pass / Porpoise Point		Parish:	Iberia
		Quad Name:	Hell Hole Bayou
Priority:	C	Quad Number:	2909232
Site Alias: None		Mile Marker:	
		Managed (Y/N)?: Y - Wildlife Area	
Site Description: Sensitive Habitat		Latitude:	29° 35' 36.434" N
		Longitude:	92° 00' 31.330" W
Response Considerations			
Site Strategy: Deflection Booming		Site Strategy Comments:	
Site Waterbody Type: Narrow Tidal Channel			
Current Wave Action: Current >1 kt			
Waterbody Opening: < 500 ft			
Resources At Risk			
ESI Code: 10A		Resources At Risk Comments:	
ESI Description 10A: Salt- and brackish-water marshes			
		Sensitive habitat - many small inlets to refuge marshes	
Contact Information			
Contact: LDWF		Special Contact:	
Site Statistics			
Submitted By Prescott Marshall		State Submitter: DEQ/Iberia Parish/LDWF/DNR/CPRA	
Submit Date: 2012.09.12		State Comments: Agencies concur with point	



Site Information: C2		Location Information	
Name: Lighthouse Point		Parish:	Iberia
		Quad Name:	Hell Hole Bayou
Priority:	C	Quad Number:	2909232
Site Alias: None		Mile Marker:	
		Managed (Y/N)?:	Y - Wildlife Area
Site Description: Sensitive Habitat		Latitude:	29° 34' 58.154" N
		Longitude:	92° 01' 33.766" W
Response Considerations			
Site Strategy: Deferred Action		Site Strategy Comments:	
Site Waterbody Type: Straight Coastline			
Current Wave Action: Breaking Waves >1.5 ft			
Waterbody Opening: Not Applicable			
Resources At Risk			
ESI Code:		Resources At Risk Comments:	
ESI Description			
		Sensitive habitat - many small inlets to refuge marshes	
Contact Information			
Contact: LDWF		Special Contact:	
Site Statistics			
Submitted By: Prescott Marshall		State Submitter: DEQ/Iberia Parish/LDWF/DNR/CPRA	
Submit Date: 2012.09.12		State Comments: Agencies concur with point	

# BAYOU LUCIEN QUAD



## Legend

- GRP Sites
- Quad Boundaries
- Parish Boundaries

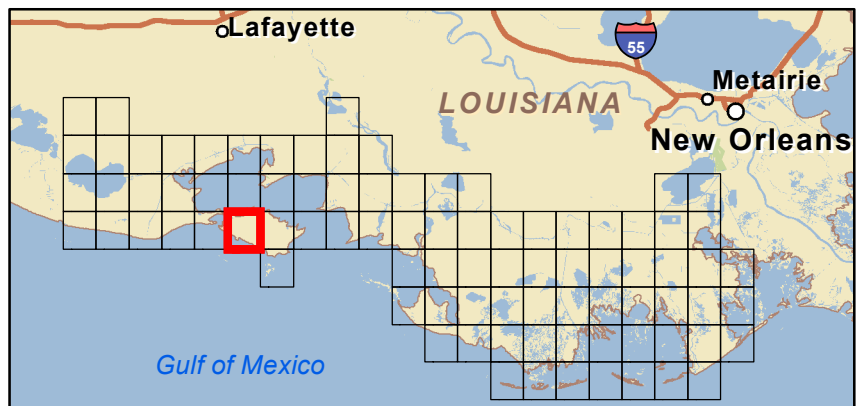


Kilometers

0 0.5 1 2 3

Miles

0 0.5 1 2 3



Site Information: A1		Location Information	
<b>Name:</b> Small Bird Island in Platte Bayou	<b>Parish:</b>	Iberia	
	<b>Quad Name:</b>	Bayou Lucien	
<b>Priority:</b> A	<b>Quad Number:</b>	2909125	
<b>Site Alias:</b> N/A  <b>Site Description:</b> State Refuge part of Marsh Island Refuge	<b>Mile Marker:</b>		
	<b>Managed (Y/N)?:</b>	Y - Wildlife Refuge	
	<b>Latitude:</b>	29° 37' 10.229" N	
	<b>Longitude:</b>	91° 53' 44.794" W	
Response Considerations			
<b>Site Strategy:</b> Deflection Booming		<b>Site Strategy Comments:</b>	
<b>Site Waterbody Type:</b> Straight Coastline			
<b>Current Wave Action:</b> Breaking Waves <1.5 ft			
<b>Waterbody Opening:</b> Not Applicable			
Resources At Risk			
<b>ESI Code:</b> 10A		<b>Resources At Risk Comments:</b>  Bird nesting island - gulls, skimmers, and terns	
<b>ESI Description</b> 10A: Salt- and brackish-water marshes			
Contact Information			
<b>Contact:</b> LDWF		<b>Special Contact:</b>	
Site Statistics			
<b>Submitted By</b> LDWF-DJ Garland and Cassidy Lejeune		<b>State Submitter:</b> LDWF/Lafourche Parish	
<b>Submit Date:</b> 2013.04.16		<b>State Comments:</b>	

Site Information: A2		Location Information	
<b>Name:</b> West Bayou Chene / Multiple Tidal Inlets	<b>Parish:</b>	Iberia	
	<b>Quad Name:</b>	Bayou Lucien	
<b>Priority:</b> A	<b>Quad Number:</b>	2909125	
<b>Site Alias:</b> N/A  <b>Site Description:</b> State Refuge part of Marsh Island Refuge	<b>Mile Marker:</b>		
	<b>Managed (Y/N)?:</b>	Y - Wildlife Refuge	
	<b>Latitude:</b>	29° 36' 30.717" N	
	<b>Longitude:</b>	91° 56' 56.736" W	
Response Considerations			
<b>Site Strategy:</b> Deflection Booming		<b>Site Strategy Comments:</b>	
<b>Site Waterbody Type:</b> Narrow Tidal Channel			
<b>Current Wave Action:</b> Current >1 kt			
<b>Waterbody Opening:</b> < 500 ft			
Resources At Risk			
<b>ESI Code:</b> 10A		<b>Resources At Risk Comments:</b>  Sensitive habitat	
<b>ESI Description</b> 10A: Salt- and brackish-water marshes			
Contact Information			
<b>Contact:</b> LDWF		<b>Special Contact:</b>	
Site Statistics			
<b>Submitted By</b> LDWF-DJ Garland and Cassidy Lejeune		<b>State Submitter:</b> LDWF/Lafourche Parish/LDEQ	
<b>Submit Date:</b> 2013.04.16		<b>State Comments:</b>	

Site Information: A3		Location Information	
Name: Large Bird Island in Platte Bayou		Parish:	Iberia
		Quad Name:	Bayou Lucien
Priority:	A	Quad Number:	2909125
Site Alias: N/A  Site Description: State Refuge part of Marsh Island Refuge		Mile Marker:	
		Managed (Y/N)?:	Y - Wildlife Refuge
		Latitude:	29° 36' 24.084" N
		Longitude:	91° 53' 28.167" W
Response Considerations			
Site Strategy: Deflection Booming		Site Strategy Comments:	
Site Waterbody Type: Straight Coastline			
Current Wave Action: Breaking Waves <1.5 ft			
Waterbody Opening: Not Applicable			
Resources At Risk			
ESI Code: 10A		Resources At Risk Comments:	
ESI Description 10A: Salt- and brackish-water marshes			
		Bird nesting island - gulls, skimmers, and terns	
Contact Information			
Contact: LDWF		Special Contact:	
Site Statistics			
Submitted By LDWF-DJ Garland and Cassidy Lejeune		State Submitter: LDWF/Lafourche Parish	
Submit Date: 2013.04.16		State Comments:	

Site Information: A4		Location Information	
Name: Big Charles Bayou		Parish:	Iberia
		Quad Name:	Bayou Lucien
Priority:	A	Quad Number:	2909125
Site Alias: N/A  Site Description: State Refuge part of Marsh Island Refuge		Mile Marker:	
		Managed (Y/N)?:	Y - Wildlife Refuge
		Latitude:	29° 35' 45.030" N
		Longitude:	91° 59' 08.389" W
Response Considerations			
Site Strategy: Deflection Booming		Site Strategy Comments:	
Site Waterbody Type: Narrow Tidal Channel			
Current Wave Action: Current >1 kt			
Waterbody Opening: < 500 ft			
Resources At Risk			
ESI Code: 10A		Resources At Risk Comments:  Wading bird nesting colony	
ESI Description 10A: Salt- and brackish-water marshes			
Contact Information			
Contact: LDWF		Special Contact:	
Site Statistics			
Submitted By LDWF-DJ Garland and Cassidy Lejeune		State Submitter: LDWF/Lafourche Parish	
Submit Date: 2013.04.16		State Comments:	

Site Information: A5		Location Information	
Name: Sandy Beach		Parish:	Iberia
		Quad Name:	Bayou Lucien
Priority: A		Quad Number:	2909125
Site Alias: None		Mile Marker:	
		Managed (Y/N)?: Y - Wildlife Area	
Site Description: Sensitive Habitat		Latitude:	29° 33' 04.755" N
		Longitude:	91° 59' 49.524" W
Response Considerations			
Site Strategy: Deferred Action		Site Strategy Comments:	
Site Waterbody Type: Straight Coastline			
Current Wave Action: Breaking Waves >1.5 ft			
Waterbody Opening: Not Applicable			
Resources At Risk			
ESI Code: 10A/5/2A		Resources At Risk Comments:	
ESI Description 10A: Salt- and brackish-water marshes / 5: Mixed sand and gravel beaches / 2A: Exposed Wave-cut Platform in clay			
Wilson Plover			
Contact Information			
Contact: N/A		Special Contact:	
Site Statistics			
Submitted By LDWF-DJ Garland and Cassidy Lejeune		State Submitter: LDWF/Lafourche Parish	
Submit Date: 2013.04.16		State Comments:	

Site Information: A6		Location Information	
Name: Exposed shell reefs / Island at GOM		Parish:	Iberia
		Quad Name:	Bayou Lucien
Priority:	A	Quad Number:	2909125
Site Alias: N/A		Mile Marker:	
		Managed (Y/N)?:	N
Site Description: State Refuge just south of Marsh Island Refuge shoreline		Latitude:	29° 31' 43.838" N
		Longitude:	91° 56' 46.135" W
Response Considerations			
Site Strategy: Deferred Action		Site Strategy Comments:	
Site Waterbody Type: Straight Coastline			
Current Wave Action: Breaking Waves >1.5 ft			
Waterbody Opening: Not Applicable			
Resources At Risk			
ESI Code:		Resources At Risk Comments:	
ESI Description			
Bird loafing area			
Contact Information			
Contact: LDWF		Special Contact:	
Site Statistics			
Submitted By LDWF-DJ Garland and Cassidy Lejeune		State Submitter: LDWF/Lafourche Parish	
Submit Date: 2013.04.16		State Comments:	



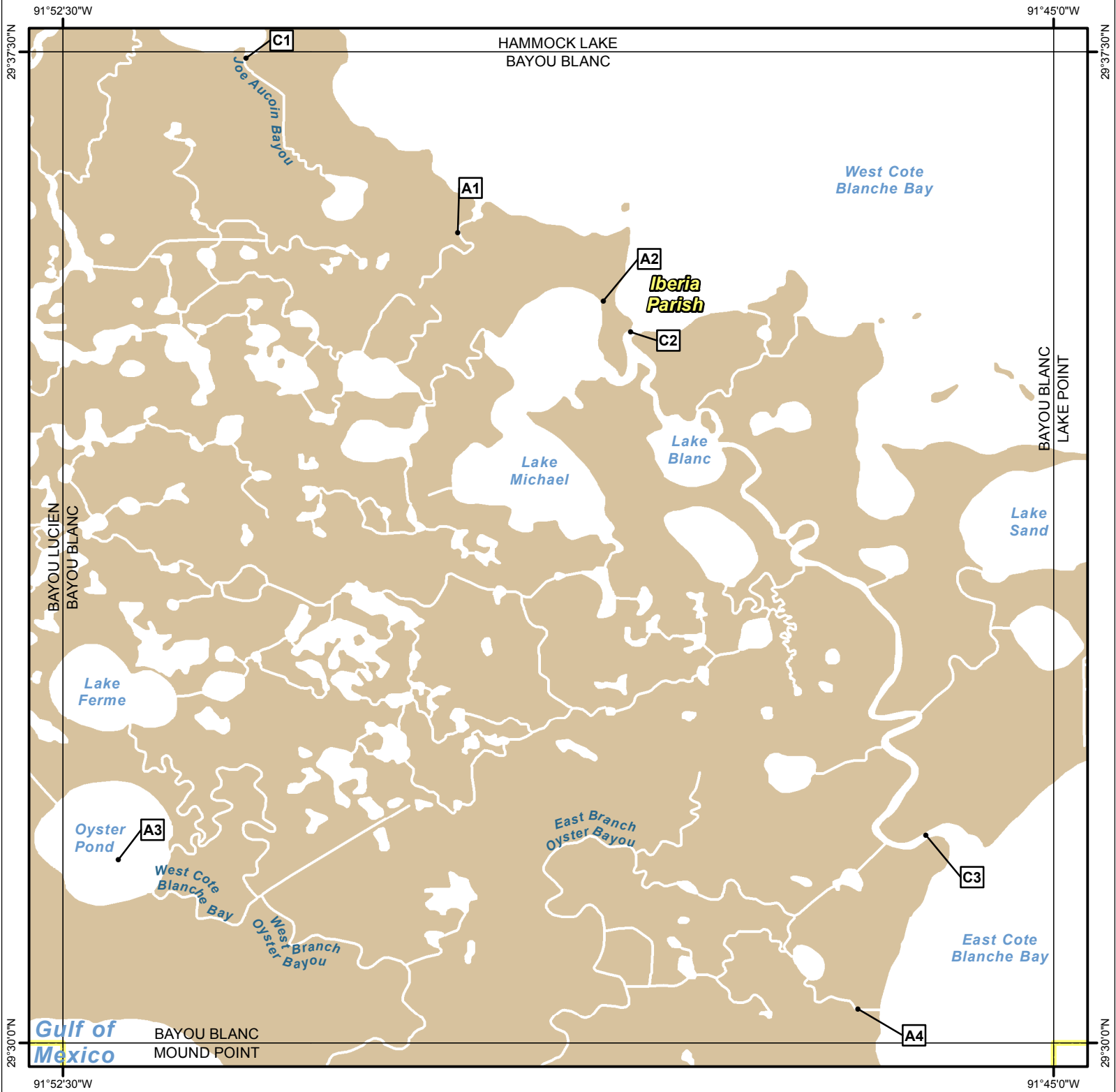
Site Information: C1		Location Information	
<b>Name:</b> Entrance to Bayou Michael from Vermilion Bay	<b>Parish:</b>	Iberia	
	<b>Quad Name:</b>	Bayou Lucien	
<b>Priority:</b> C	<b>Quad Number:</b>	2909125	
<b>Site Alias:</b> None  <b>Site Description:</b> State Refuge part of Marsh Island Refuge	<b>Mile Marker:</b>		
	<b>Managed (Y/N)?:</b>	Y - Wildlife Refuge	
	<b>Latitude:</b>	29° 37' 19.180" N	
	<b>Longitude:</b>	91° 55' 28.007" W	
Response Considerations			
<b>Site Strategy:</b> Deflection Booming		<b>Site Strategy Comments:</b>	
<b>Site Waterbody Type:</b> Narrow Tidal Channel			
<b>Current Wave Action:</b> Current >1 kt			
<b>Waterbody Opening:</b> 500-1000 ft			
Resources At Risk			
<b>ESI Code:</b> 10A		<b>Resources At Risk Comments:</b>  Sensitive habitat / Marshland and fisheries	
<b>ESI Description</b> 10A: Salt- and brackish-water marshes			
Contact Information			
<b>Contact:</b> LDWF		<b>Special Contact:</b>	
Site Statistics			
<b>Submitted By</b> Prescott Marshall		<b>State Submitter:</b> DEQ/Iberia Parish/LDWF/DNR/CPRA	
<b>Submit Date:</b> 2012.09.12		<b>State Comments:</b> Agencies concur with point	

Site Information: C2		Location Information	
<b>Name:</b> Entrance to Big Charles Bayou from Vermilion Bay		<b>Parish:</b>	Iberia
		<b>Quad Name:</b>	Bayou Lucien
<b>Priority:</b> C		<b>Quad Number:</b>	2909125
<b>Site Alias:</b> None  <b>Site Description:</b> State Refuge part of Marsh Island Refuge		<b>Mile Marker:</b>	
		<b>Managed (Y/N)?:</b> Y - Wildlife Refuge	
		<b>Latitude:</b>	29° 36' 42.903" N
		<b>Longitude:</b>	91° 59' 10.002" W
Response Considerations			
<b>Site Strategy:</b> Deferred Action		<b>Site Strategy Comments:</b>	
<b>Site Waterbody Type:</b> Narrow Tidal Channel			
<b>Current Wave Action:</b> Current >1 kt			
<b>Waterbody Opening:</b> 1000-1500 ft			
Resources At Risk			
<b>ESI Code:</b> 10A		<b>Resources At Risk Comments:</b>  Sensitive habitat / Marshland and fisheries	
<b>ESI Description</b> 10A: Salt- and brackish-water marshes			
Contact Information			
<b>Contact:</b> LDWF		<b>Special Contact:</b>	
Site Statistics			
<b>Submitted By</b> Prescott Marshall		<b>State Submitter:</b> DEQ/Iberia Parish/LDWF/DNR/CPRA	
<b>Submit Date:</b> 2012.09.12		<b>State Comments:</b> Agencies concur with point	

Site Information: C3		Location Information	
<b>Name:</b> Entrance to Bayou Chene from Vermilion Bay	<b>Parish:</b>	Iberia	
	<b>Quad Name:</b>	Bayou Lucien	
<b>Priority:</b> C	<b>Quad Number:</b>	2909125	
<b>Site Alias:</b> None	<b>Mile Marker:</b>		
	<b>Managed (Y/N)?:</b>	Y - Wildlife Refuge	
	<b>Latitude:</b>	29° 36' 36.487" N	
<b>Site Description:</b> State Refuge part of Marsh Island Refuge	<b>Longitude:</b>	91° 56' 22.591" W	
Response Considerations			
<b>Site Strategy:</b> Deflection Booming		<b>Site Strategy Comments:</b>	
<b>Site Waterbody Type:</b> Narrow Tidal Channel			
<b>Current Wave Action:</b> Current >1 kt			
<b>Waterbody Opening:</b> < 500 ft			
Resources At Risk			
<b>ESI Code:</b> 10A		<b>Resources At Risk Comments:</b> Sensitive habitat / Marshland and fisheries	
<b>ESI Description</b> 10A: Salt- and brackish-water marshes			
Contact Information			
<b>Contact:</b> LDWF		<b>Special Contact:</b>	
Site Statistics			
<b>Submitted By</b> Prescott Marshall		<b>State Submitter:</b> DEQ/Iberia Parish/LDWF/DNR/CPRA	
<b>Submit Date:</b> 2012.09.12		<b>State Comments:</b> Agencies concur with point	

Site Information: C4		Location Information	
<b>Name:</b> Entrance to Little Charles Bayou from Vermilion Bay		<b>Parish:</b>	Iberia
		<b>Quad Name:</b>	Bayou Lucien
<b>Priority:</b> C		<b>Quad Number:</b>	2909125
<b>Site Alias:</b> None  <b>Site Description:</b> State Refuge part of Marsh Island Refuge		<b>Mile Marker:</b>	
		<b>Managed (Y/N)?:</b> Y - Wildlife Refuge	
		<b>Latitude:</b>	29° 36' 33.884" N
		<b>Longitude:</b>	91° 58' 15.252" W
Response Considerations			
<b>Site Strategy:</b> Deferred Action		<b>Site Strategy Comments:</b>	
<b>Site Waterbody Type:</b> Entrance to Bays, etc			
<b>Current Wave Action:</b> Breaking Waves >1.5 ft			
<b>Waterbody Opening:</b> 500-1000 ft			
Resources At Risk			
<b>ESI Code:</b> 10A		<b>Resources At Risk Comments:</b>  Sensitive habitat / Marshland and fisheries	
<b>ESI Description</b> 10A: Salt- and brackish-water marshes			
Contact Information			
<b>Contact:</b> LDWF		<b>Special Contact:</b>	
Site Statistics			
<b>Submitted By</b> Prescott Marshall		<b>State Submitter:</b> DEQ/Iberia Parish/LDWF/DNR/CPRA	
<b>Submit Date:</b> 2012.09.12		<b>State Comments:</b> Agencies concur with point	

# BAYOU BLANC QUAD



### Legend

- GRP Sites
- Quad Boundaries
- Parish Boundaries

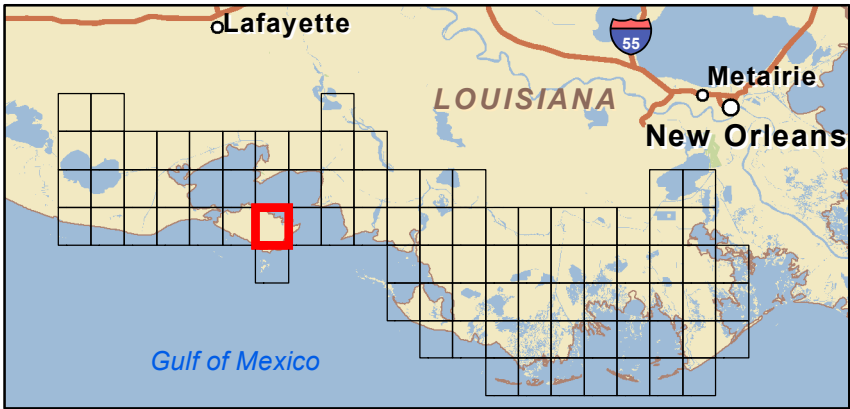
Kilometers

00.5123

Miles

00.5123

N



Site Information: A1		Location Information	
<b>Name:</b> Gordy Lake Bayou at West Cote Blanche Bay		<b>Parish:</b>	Iberia
		<b>Quad Name:</b>	Bayou Blanc
<b>Priority:</b> A		<b>Quad Number:</b>	2909126
<b>Site Alias:</b> N/A  <b>Site Description:</b> State Refuge part of Marsh Island Refuge		<b>Mile Marker:</b>	
		<b>Managed (Y/N)?:</b> Y - Wildlife Refuge	
		<b>Latitude:</b>	29° 36' 08.094" N
		<b>Longitude:</b>	91° 49' 30.566" W
Response Considerations			
<b>Site Strategy:</b> Deflection Booming		<b>Site Strategy Comments:</b>	
<b>Site Waterbody Type:</b> Narrow Tidal Channel			
<b>Current Wave Action:</b> Current >1 kt			
<b>Waterbody Opening:</b> < 500 ft			
Resources At Risk			
<b>ESI Code:</b> 10A		<b>Resources At Risk Comments:</b>  Sensitive habitat	
<b>ESI Description</b> 10A: Salt- and brackish-water marshes			
Contact Information			
<b>Contact:</b> LDWF		<b>Special Contact:</b>	
Site Statistics			
<b>Submitted By</b> LDWF-DJ Garland and Cassidy Lejeune		<b>State Submitter:</b> LDWF/Lafourche Parish/LDEQ	
<b>Submit Date:</b> 2013.04.16		<b>State Comments:</b>	

Site Information: A2		Location Information	
<b>Name:</b> Entrance into Tom Lake	<b>Parish:</b> Iberia	<b>Quad Name:</b> Bayou Blanc	
	<b>Quad Number:</b> 2909126		
<b>Priority:</b> A	<b>Mile Marker:</b>		
<b>Site Alias:</b> N/A	<b>Managed (Y/N)?:</b> Y - Wildlife Refuge		
	<b>Latitude:</b> 29° 35' 37.065" N		
	<b>Longitude:</b> 91° 48' 24.520" W		
<b>Response Considerations</b>			
<b>Site Strategy:</b> Deferred Action		<b>Site Strategy Comments:</b>	
<b>Site Waterbody Type:</b> Entrance to Bays, etc			
<b>Current Wave Action:</b> Breaking Waves >1.5 ft			
<b>Waterbody Opening:</b> < 500 ft			
<b>Resources At Risk</b>			
<b>ESI Code:</b> 10A		<b>Resources At Risk Comments:</b> Skimmer and tern nesting colony	
<b>ESI Description</b> 10A: Salt- and brackish-water marshes			
<b>Contact Information</b>			
<b>Contact:</b> LDWF		<b>Special Contact:</b>	
<b>Site Statistics</b>			
<b>Submitted By</b> Preexisting Parish Assessment		<b>State Submitter:</b> DEQ/Iberia Parish/LDWF/DNR/CPRA	
<b>Submit Date:</b> 2012.10.01		<b>State Comments:</b> Agencies concur with point	

Site Information: A3		Location Information	
<b>Name:</b> Loafing/Nesting Birds Island in Oyster Lake	<b>Parish:</b>	Iberia	
	<b>Quad Name:</b>	Bayou Blanc	
<b>Priority:</b> A	<b>Quad Number:</b>	2909126	
<b>Site Alias:</b> N/A	<b>Mile Marker:</b>		
	<b>Managed (Y/N)?:</b>	Y - Wildlife Refuge	
	<b>Latitude:</b>	29° 31' 23.180" N	
<b>Site Description:</b> State Refuge part of Marsh Island Refuge	<b>Longitude:</b>	91° 52' 04.830" W	
Response Considerations			
<b>Site Strategy:</b> Deferred Action		<b>Site Strategy Comments:</b>	
<b>Site Waterbody Type:</b> Straight Coastline			
<b>Current Wave Action:</b> Breaking Waves >1.5 ft			
<b>Waterbody Opening:</b> Not Applicable			
Resources At Risk			
<b>ESI Code:</b>		<b>Resources At Risk Comments:</b>	
<b>ESI Description</b>			
		Seabird loafing area	
Contact Information			
<b>Contact:</b> LDWF		<b>Special Contact:</b>	
Site Statistics			
<b>Submitted By</b> LDWF-DJ Garland and Cassidy Lejeune		<b>State Submitter:</b> LDWF/Lafourche Parish	
<b>Submit Date:</b> 2013.04.16		<b>State Comments:</b>	



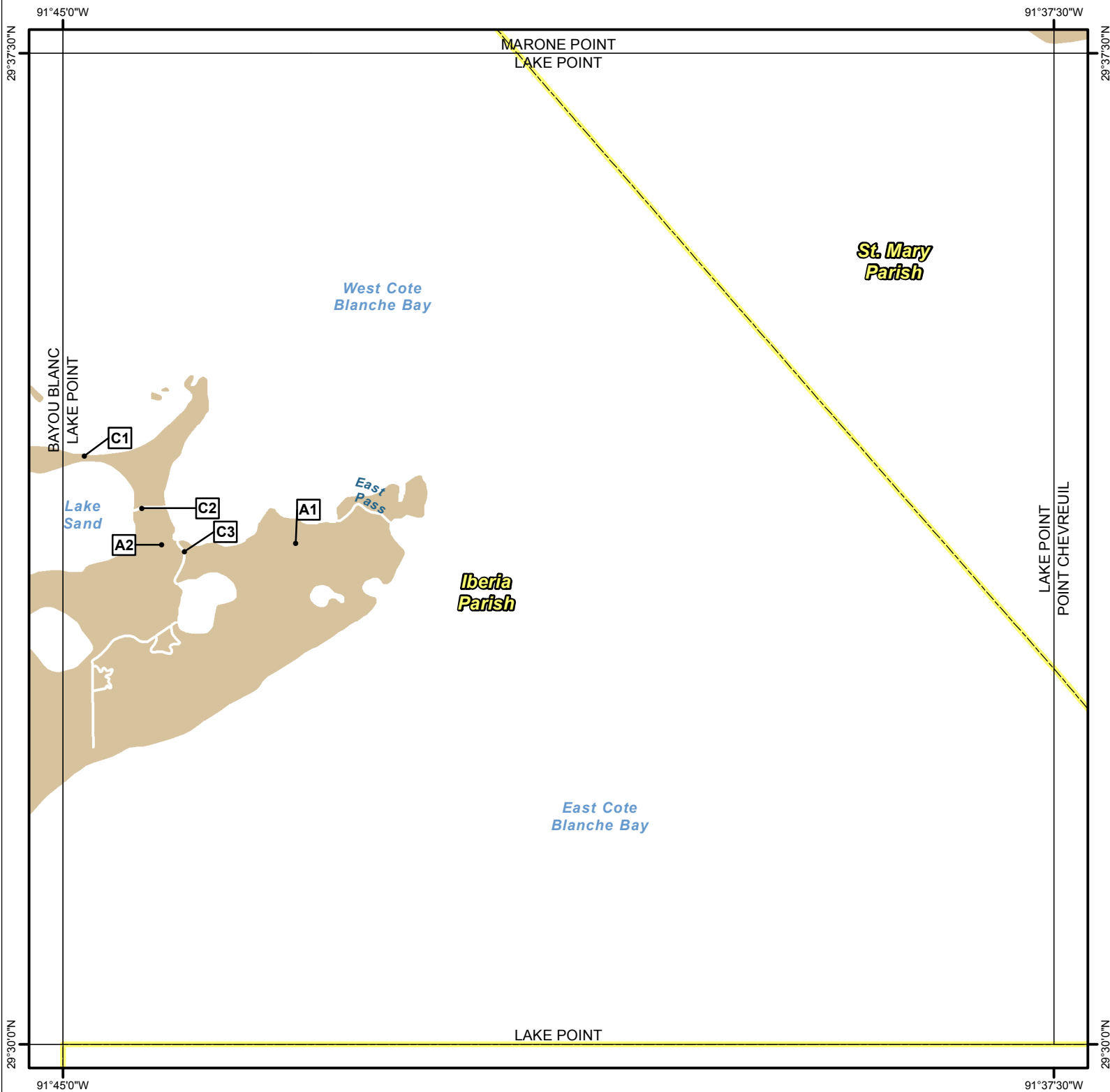
Site Information: A4		Location Information	
<b>Name:</b> Bayou south of Bayou Blanc at GOM		<b>Parish:</b>	Iberia
		<b>Quad Name:</b>	Bayou Blanc
<b>Priority:</b> A		<b>Quad Number:</b>	2909126
<b>Site Alias:</b> N/A  <b>Site Description:</b> State Refuge part of Marsh Island Refuge		<b>Mile Marker:</b>	
		<b>Managed (Y/N)?:</b> Y - Wildlife Refuge	
		<b>Latitude:</b>	29° 30' 15.450" N
		<b>Longitude:</b>	91° 46' 28.848" W
Response Considerations			
<b>Site Strategy:</b> Deferred Action		<b>Site Strategy Comments:</b>	
<b>Site Waterbody Type:</b> Entrance to Bays, etc			
<b>Current Wave Action:</b> Breaking Waves >1.5 ft			
<b>Waterbody Opening:</b> < 500 ft			
Resources At Risk			
<b>ESI Code:</b> 10A/2A		<b>Resources At Risk Comments:</b>  Sensitive habitat - inlet to prime waterfowl habitat	
<b>ESI Description</b> 10A: Salt- and brackish-water marshes / 2A: Exposed Wave-cut Platform in clay			
Contact Information			
<b>Contact:</b> LDWF		<b>Special Contact:</b>	
Site Statistics			
<b>Submitted By</b> LDWF-DJ Garland and Cassidy Lejeune		<b>State Submitter:</b> LDWF/Lafourche Parish	
<b>Submit Date:</b> 2013.04.16		<b>State Comments:</b>	

Site Information: C1		Location Information	
<b>Name:</b> Joe Aucoin Bayou entrance at West Cote Blanche Bay (drilling channel)		<b>Parish:</b>	Iberia
		<b>Quad Name:</b>	Bayou Blanc
<b>Priority:</b> C		<b>Quad Number:</b>	2909126
<b>Site Alias:</b> None  <b>Site Description:</b> State Refuge part of Marsh Island Refuge		<b>Mile Marker:</b>	
		<b>Managed (Y/N)?:</b> Y - Wildlife Refuge	
		<b>Latitude:</b>	29° 37' 27.194" N
		<b>Longitude:</b>	91° 51' 06.857" W
Response Considerations			
<b>Site Strategy:</b> Deflection Booming		<b>Site Strategy Comments:</b>	
<b>Site Waterbody Type:</b> Narrow Tidal Channel			
<b>Current Wave Action:</b> Current >1 kt			
<b>Waterbody Opening:</b> < 500 ft			
Resources At Risk			
<b>ESI Code:</b> 10A		<b>Resources At Risk Comments:</b>  Sensitive habitat / Marshland and fisheries	
<b>ESI Description</b> 10A: Salt- and brackish-water marshes			
Contact Information			
<b>Contact:</b> LDWF		<b>Special Contact:</b>	
Site Statistics			
<b>Submitted By</b> Prescott Marshall		<b>State Submitter:</b> DEQ/Iberia Parish/LDWF/DNR/CPRA	
<b>Submit Date:</b> 2012.09.12		<b>State Comments:</b> Agencies concur with point	

Site Information: C2		Location Information	
Name: Worm Cove	Parish: Iberia	Quad Name: Bayou Blanc	
	Priority: C	Quad Number: 2909126	
Site Alias: None	Mile Marker:	Managed (Y/N)?: Y - Wildlife Refuge	
	Site Description: State Refuge part of Marsh Island Refuge	Latitude: 29° 35' 22.865" N	Longitude: 91° 48' 12.102" W
Response Considerations			
Site Strategy: Deflection Booming		Site Strategy Comments:	
Site Waterbody Type: Narrow Tidal Channel			
Current Wave Action: Current >1 kt			
Waterbody Opening: 500-1000 ft			
Resources At Risk			
ESI Code: 10A		Resources At Risk Comments: Sensitive habitat / Marshland and fisheries	
ESI Description 10A: Salt- and brackish-water marshes			
Contact Information			
Contact: LDWF		Special Contact:	
Site Statistics			
Submitted By Prescott Marshall		State Submitter: DEQ/Iberia Parish/LDWF/DNR/CPRA	
Submit Date: 2012.09.12		State Comments: Agencies concur with point	

Site Information: C3		Location Information	
Name: Bayou Blanc at GOM		Parish:	Iberia
		Quad Name:	Bayou Blanc
Priority:	C	Quad Number:	2909126
Site Alias: None		Mile Marker:	
		Managed (Y/N)?: Y - Wildlife Refuge	
		Latitude:	29° 31' 34.302" N
Site Description: State Refuge part of Marsh Island Refuge		Longitude:	91° 45' 57.974" W
Response Considerations			
Site Strategy: Deferred Action		Site Strategy Comments:	
Site Waterbody Type: Entrance to Bays, etc			
Current Wave Action: Breaking Waves >1.5 ft			
Waterbody Opening: < 500 ft			
Resources At Risk			
ESI Code: 10A/2A		Resources At Risk Comments:	
ESI Description 10A: Salt- and brackish-water marshes / 2A: Exposed Wave-cut Platform in clay			
		Sensitive habitat / Marshland and fisheries	
Contact Information			
Contact: LDWF		Special Contact:	
Site Statistics			
Submitted By Prescott Marshall		State Submitter: DEQ/Iberia Parish/LDWF/DNR/CPRA	
Submit Date: 2012.09.12		State Comments: Agencies concur with point	

# LAKE POINT QUAD



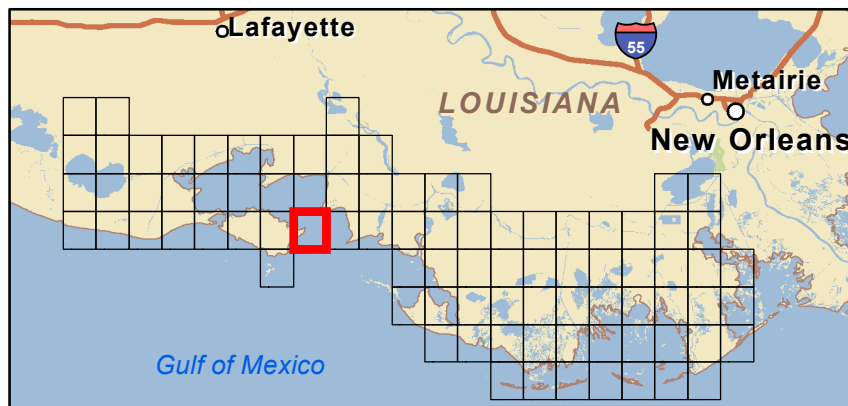
## Legend

- GRP Sites
- Quad Boundaries
- Parish Boundaries



0 0.5 1 2 3 Kilometers

0 0.5 1 2 3 Miles



Site Information: A1		Location Information	
<b>Name:</b> East Location Canal		<b>Parish:</b>	Iberia
		<b>Quad Name:</b>	Lake Point
<b>Priority:</b> A		<b>Quad Number:</b>	2909127
<b>Site Alias:</b> N/A  <b>Site Description:</b> State Refuge part of Marsh Island Refuge		<b>Mile Marker:</b>	
		<b>Managed (Y/N)?:</b> Y - Wildlife Refuge	
		<b>Latitude:</b>	29° 33' 47.673" N
		<b>Longitude:</b>	91° 43' 14.270" W
Response Considerations			
<b>Site Strategy:</b> Exclusion Booming		<b>Site Strategy Comments:</b>	
<b>Site Waterbody Type:</b> Narrow Tidal Channel			
<b>Current Wave Action:</b> Currents <1 kt			
<b>Waterbody Opening:</b> < 500 ft			
Resources At Risk			
<b>ESI Code:</b> 10A		<b>Resources At Risk Comments:</b>  Sensitive habitat	
<b>ESI Description</b> 10A: Salt- and brackish-water marshes			
Contact Information			
<b>Contact:</b> LDWF		<b>Special Contact:</b>	
Site Statistics			
<b>Submitted By</b> LDWF-DJ Garland and Cassidy Lejeune		<b>State Submitter:</b> LDWF/Lafourche Parish/LDEQ	
<b>Submit Date:</b> 2013.04.16		<b>State Comments:</b>	

Site Information: A2		Location Information	
<b>Name:</b> Canal	<b>Parish:</b> Iberia	<b>Quad Name:</b> Lake Point	
	<b>Quad Number:</b> 2909127		
<b>Priority:</b> A	<b>Mile Marker:</b>		
<b>Site Alias:</b> N/A	<b>Managed (Y/N)?:</b> Y - Wildlife Refuge		
	<b>Latitude:</b> 29° 33' 46.820" N		
	<b>Longitude:</b> 91° 44' 15.257" W		
<b>Site Description:</b> State Refuge part of Marsh Island Refuge			
Response Considerations			
<b>Site Strategy:</b> Exclusion Booming		<b>Site Strategy Comments:</b>	
<b>Site Waterbody Type:</b> Narrow Tidal Channel			
<b>Current Wave Action:</b> Currents <1 kt			
<b>Waterbody Opening:</b> < 500 ft			
Resources At Risk			
<b>ESI Code:</b> 10A		<b>Resources At Risk Comments:</b> Sensitive Habitat	
<b>ESI Description</b> 10A: Salt- and brackish-water marshes			
Contact Information			
<b>Contact:</b> LDWF		<b>Special Contact:</b>	
Site Statistics			
<b>Submitted By</b> DEQ-Shane Miller and Steve Lorio		<b>State Submitter:</b> DEQ-Shane Miller and Steve Lorio	
<b>Submit Date:</b> 2013.04.16		<b>State Comments:</b> Sensitive Habitat	

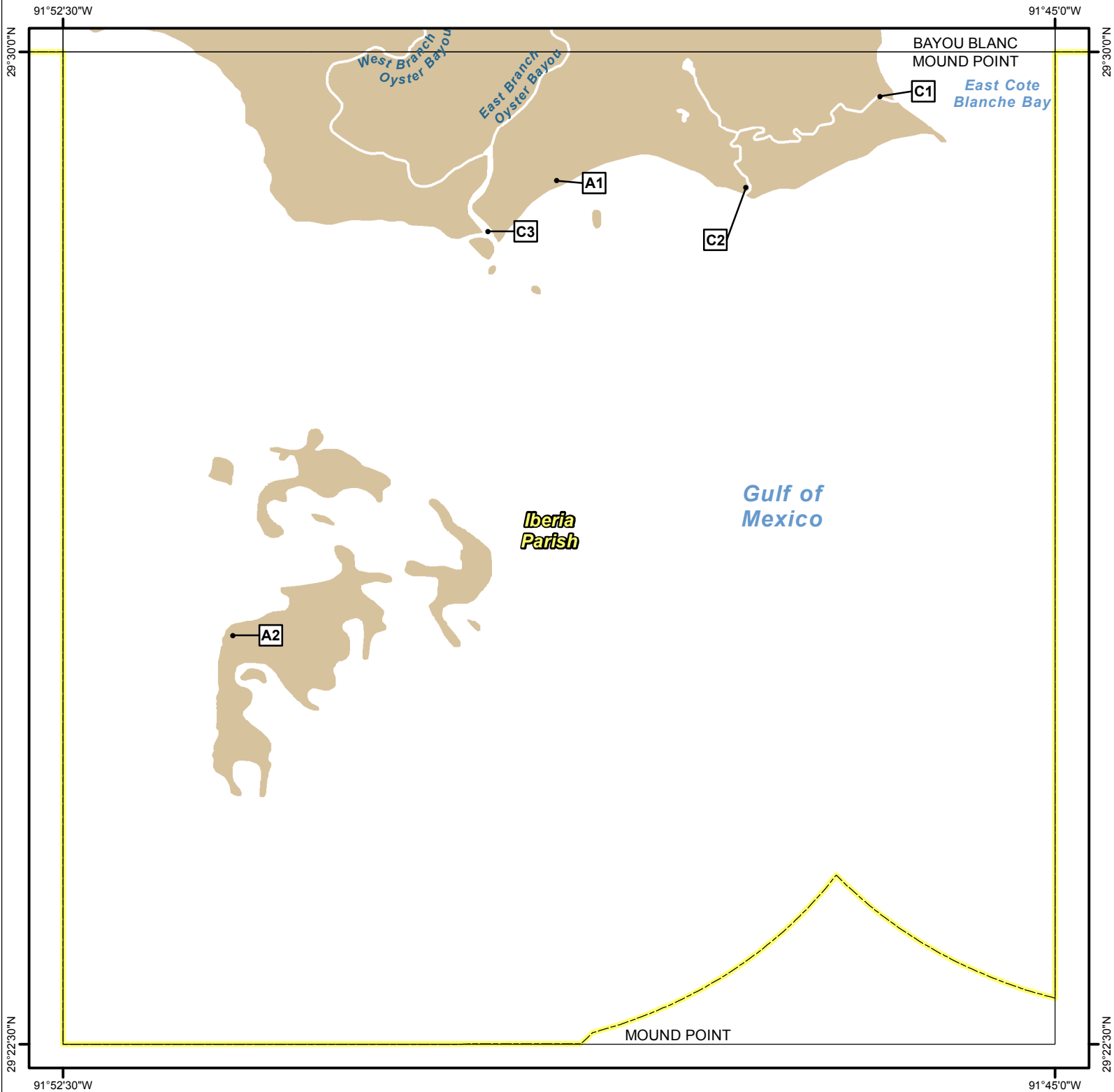
Site Information: C1		Location Information	
Name: Lake Sand Terraces		Parish:	Iberia
		Quad Name:	Lake Point
Priority:	C	Quad Number:	2909127
Site Alias: None		Mile Marker:	
		Managed (Y/N)?: Y - Wildlife Refuge	
		Latitude:	29° 34' 27.266" N
Site Description: State Refuge part of Marsh Island Refuge		Longitude:	91° 44' 50.312" W
Response Considerations			
Site Strategy: Deferred Action		Site Strategy Comments:	
Site Waterbody Type: Entrance to Bays, etc			
Current Wave Action: Breaking Waves >1.5 ft			
Waterbody Opening: 1000-1500 ft			
Resources At Risk			
ESI Code: 10A		Resources At Risk Comments: Tern, gull, and skimmer nesting area / Marshland and fisheries	
ESI Description 10A: Salt- and brackish-water marshes			
Contact Information			
Contact: LDWF		Special Contact:	
Site Statistics			
Submitted By Prescott Marshall		State Submitter: DEQ/Iberia Parish/LDWF/DNR/CPRA	
Submit Date: 2012.09.12		State Comments: Agencies concur with point	



Site Information: C2		Location Information	
<b>Name:</b> East Entrance to Lake Sand from East Cote Blanche Bay	<b>Parish:</b>	Iberia	
	<b>Quad Name:</b>	Lake Point	
<b>Priority:</b> C	<b>Quad Number:</b>	2909127	
<b>Site Alias:</b> None  <b>Site Description:</b> State Refuge part of Marsh Island Refuge	<b>Mile Marker:</b>		
	<b>Managed (Y/N)?:</b>	Y - Wildlife Refuge	
	<b>Latitude:</b>	29° 34' 03.465" N	
	<b>Longitude:</b>	91° 44' 24.156" W	
Response Considerations			
<b>Site Strategy:</b> Deferred Action		<b>Site Strategy Comments:</b>	
<b>Site Waterbody Type:</b> Entrance to Bays, etc			
<b>Current Wave Action:</b> Breaking Waves >1.5 ft			
<b>Waterbody Opening:</b> < 500 ft			
Resources At Risk			
<b>ESI Code:</b> 10A		<b>Resources At Risk Comments:</b>  Sensitive Habitat / Marshland and fisheries	
<b>ESI Description</b> 10A: Salt- and brackish-water marshes			
Contact Information			
<b>Contact:</b> LDWF		<b>Special Contact:</b>	
Site Statistics			
<b>Submitted By</b> Prescott Marshall		<b>State Submitter:</b> DEQ/Iberia Parish/LDWF/DNR/CPRA	
<b>Submit Date:</b> 2012.09.12		<b>State Comments:</b> Agencies concur with point	

Site Information: C3		Location Information	
<b>Name:</b> Entrance to Hawkins Bayou from East Cote Blanche Bay	<b>Parish:</b>	Iberia	
	<b>Quad Name:</b>	Lake Point	
<b>Priority:</b> C	<b>Quad Number:</b>	2909127	
<b>Site Alias:</b> None  <b>Site Description:</b> State Refuge part of Marsh Island Refuge	<b>Mile Marker:</b>		
	<b>Managed (Y/N)?:</b>	Y - Wildlife Refuge	
	<b>Latitude:</b>	29° 33' 43.722" N	
	<b>Longitude:</b>	91° 44' 04.766" W	
Response Considerations			
<b>Site Strategy:</b> Deflection Booming		<b>Site Strategy Comments:</b>	
<b>Site Waterbody Type:</b> Narrow Tidal Channel			
<b>Current Wave Action:</b> Current >1 kt			
<b>Waterbody Opening:</b> < 500 ft			
Resources At Risk			
<b>ESI Code:</b> 10A		<b>Resources At Risk Comments:</b>  Sensitive Habitat / Marshland and fisheries	
<b>ESI Description</b> 10A: Salt- and brackish-water marshes			
Contact Information			
<b>Contact:</b> LDWF		<b>Special Contact:</b>	
Site Statistics			
<b>Submitted By</b> Prescott Marshall		<b>State Submitter:</b> DEQ/Iberia Parish/LDWF/DNR/CPRA	
<b>Submit Date:</b> 2012.09.12		<b>State Comments:</b> Agencies concur with point	

# MOUND POINT QUAD



## Legend

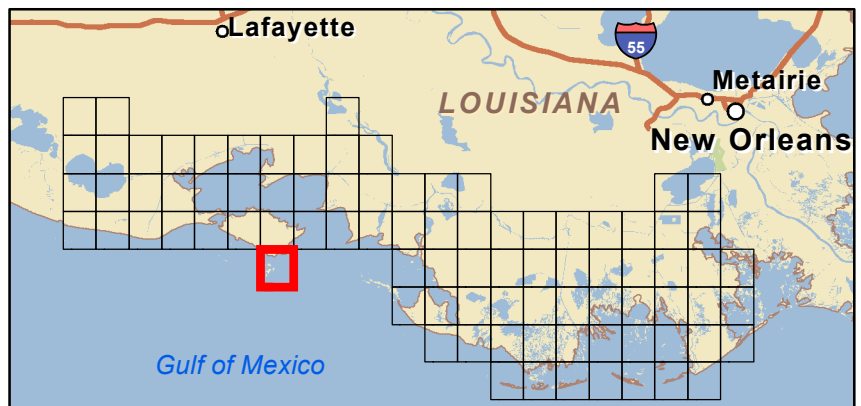
- GRP Sites
- Quad Boundaries
- Parish Boundaries

Kilometers

0 0.5 1 2 3

Miles

0 0.5 1 2 3



Site Information: A1		Location Information	
Name: Skimmer Colony		Parish:	Iberia
		Quad Name:	Mound Point
Priority: A		Quad Number:	2909134
Site Alias: None		Mile Marker:	
		Managed (Y/N)?:	Y - Wildlife Area
Site Description: Sensitive Habitat		Latitude:	29° 29' 01.670" N
		Longitude:	91° 48' 46.090" W
Response Considerations			
Site Strategy: Deferred Action		Site Strategy Comments:	
Site Waterbody Type: Straight Coastline			
Current Wave Action: Breaking Waves >1.5 ft			
Waterbody Opening: Not Applicable			
Resources At Risk			
ESI Code: 6A/2A/7		Resources At Risk Comments:  Skimmer Colony	
ESI Description 6A: Gravel beaches / 2A: Exposed Wave-cut Platform in clay / 7: Exposed tidal flats			
Contact Information			
Contact: N/A		Special Contact:	
Site Statistics			
Submitted By LDWF-DJ Garland and Cassidy Lejeune		State Submitter: LDWF/Lafourche Parish	
Submit Date: 2013.04.16		State Comments:	

Site Information: A2		Location Information	
Name: Shell Keys National Wildlife Refuge		Parish:	Iberia
		Quad Name:	Mound Point
Priority:	A	Quad Number:	2909134
Site Alias: N/A		Mile Marker:	
		Managed (Y/N)?: Y - Wildlife Refuge	
Site Description: State Refuge part of National Wildlife Refuge		Latitude:	29° 25' 35.502" N
		Longitude:	91° 51' 12.870" W
Response Considerations			
Site Strategy: Deferred Action		Site Strategy Comments:	
Site Waterbody Type: Straight Coastline			
Current Wave Action: Breaking Waves >1.5 ft			
Waterbody Opening: Not Applicable			
Resources At Risk			
ESI Code: 10A		Resources At Risk Comments: Sensitive habitat - exposed reef system - large bird loafing area	
ESI Description 10A: Salt- and brackish-water marshes			
Contact Information			
Contact: USFWS		Special Contact:	
Site Statistics			
Submitted By LDWF-DJ Garland and Cassidy Lejeune		State Submitter: LDWF/Lafourche Parish	
Submit Date: 2013.04.16		State Comments:	

Site Information: C1		Location Information	
<b>Name:</b> Entrance to South Point Inlet from GOM	<b>Parish:</b>	Iberia	
	<b>Quad Name:</b>	Mound Point	
<b>Priority:</b> C	<b>Quad Number:</b>	2909134	
<b>Site Alias:</b> None	<b>Mile Marker:</b>		
	<b>Managed (Y/N)?:</b>	Y - Wildlife Refuge	
	<b>Latitude:</b>	29° 29' 39.932" N	
<b>Site Description:</b> State Refuge part of Marsh Island Refuge	<b>Longitude:</b>	91° 46' 19.282" W	
Response Considerations			
<b>Site Strategy:</b> Deflection Booming		<b>Site Strategy Comments:</b>	
<b>Site Waterbody Type:</b> Narrow Tidal Channel			
<b>Current Wave Action:</b> Current >1 kt			
<b>Waterbody Opening:</b> < 500 ft			
Resources At Risk			
<b>ESI Code:</b> 6A/2A		<b>Resources At Risk Comments:</b>	
<b>ESI Description</b> 6A: Gravel beaches / 2A: Exposed Wave-cut Platform in clay			
		Sensitive habitat - inlet to prime waterfowl habitat / Marshland and fisheries	
Contact Information			
<b>Contact:</b> LDWF		<b>Special Contact:</b>	
Site Statistics			
<b>Submitted By</b> Prescott Marshall		<b>State Submitter:</b> DEQ/Iberia Parish/LDWF/DNR/CPRA	
<b>Submit Date:</b> 2012.09.12		<b>State Comments:</b> Agencies concur with point	

Site Information: C2		Location Information	
<b>Name:</b> Oyster Bayou (east branch) at GOM		<b>Parish:</b>	Iberia
		<b>Quad Name:</b>	Mound Point
<b>Priority:</b> C		<b>Quad Number:</b>	2909134
<b>Site Alias:</b> None  <b>Site Description:</b> State Refuge part of Marsh Island Refuge		<b>Mile Marker:</b>	
		<b>Managed (Y/N)?:</b> Y - Wildlife Refuge	
		<b>Latitude:</b>	29° 28' 58.546" N
		<b>Longitude:</b>	91° 47' 20.076" W
Response Considerations			
<b>Site Strategy:</b> Deflection Booming		<b>Site Strategy Comments:</b>	
<b>Site Waterbody Type:</b> Narrow Tidal Channel			
<b>Current Wave Action:</b> Current >1 kt			
<b>Waterbody Opening:</b> < 500 ft			
Resources At Risk			
<b>ESI Code:</b> 10A/2A		<b>Resources At Risk Comments:</b>  Sensitive habitat - inlet to prime waterfowl habitat / Marshland and fisheries	
<b>ESI Description</b> 10A: Salt- and brackish-water marshes / 2A: Exposed Wave-cut Platform in clay			
Contact Information			
<b>Contact:</b> LDWF		<b>Special Contact:</b>	
Site Statistics			
<b>Submitted By</b> Prescott Marshall		<b>State Submitter:</b> DEQ/Iberia Parish/LDWF/DNR/CPRA	
<b>Submit Date:</b> 2012.09.12		<b>State Comments:</b> Agencies concur with point	

Site Information: C3		Location Information	
<b>Name:</b> Oyster Bayou at GOM		<b>Parish:</b>	Iberia
		<b>Quad Name:</b>	Mound Point
<b>Priority:</b> C		<b>Quad Number:</b>	2909134
<b>Site Alias:</b> None  <b>Site Description:</b> State Refuge part of Marsh Island Refuge		<b>Mile Marker:</b>	
		<b>Managed (Y/N)?:</b> Y - Wildlife Refuge	
		<b>Latitude:</b>	29° 28' 38.741" N
		<b>Longitude:</b>	91° 49' 17.215" W
Response Considerations			
<b>Site Strategy:</b> Deflection Booming		<b>Site Strategy Comments:</b>	
<b>Site Waterbody Type:</b> Narrow Tidal Channel			
<b>Current Wave Action:</b> Current >1 kt			
<b>Waterbody Opening:</b> < 500 ft			
Resources At Risk			
<b>ESI Code:</b> 10A/2A/7		<b>Resources At Risk Comments:</b>	
<b>ESI Description</b> 10A: Salt- and brackish-water marshes / 2A: Exposed Wave-cut Platform in clay / 7: Exposed tidal flats			
		Sensitive habitat - inlet to prime waterfowl habitat / Marshland and fisheries	
Contact Information			
<b>Contact:</b> LDWF		<b>Special Contact:</b>	
Site Statistics			
<b>Submitted By</b> Prescott Marshall		<b>State Submitter:</b> DEQ/Iberia Parish/LDWF/DNR/CPRA	
<b>Submit Date:</b> 2012.09.12		<b>State Comments:</b> Agencies concur with point	